

ARCTIC DAY INUIT

WE ARE AN ADAPTABLE PEOPLE.
THERE'S NO DOUBT ABOUT IT. WE HAD
TO BE.

THAT'S HOW WE ALWAYS TRAVEL FROM
SEASON TO SEASON IN SEARCH OF
ANIMALS. WE WEATHERED THIS STORM
OF MODERNIZATION PRETTY WELL...

2023 PRIX DE LA FONDATION JACQUES ROUGERIE

Catégorie de Prix : ARCHITECTURE ET INNOVATION RELATED TO CLIMATE AND RISING WATER

Nom du projet

Description

ARCTIC DAY - INUIT

... THE ADVERSITIES THEY FACE, THE INTENSE COLD ... A TRIP
THROUGH REGIONS OF ICE WAS A PROBLEM THAT AWAITED THEM.

CHARLIE CHAPLIN 1925

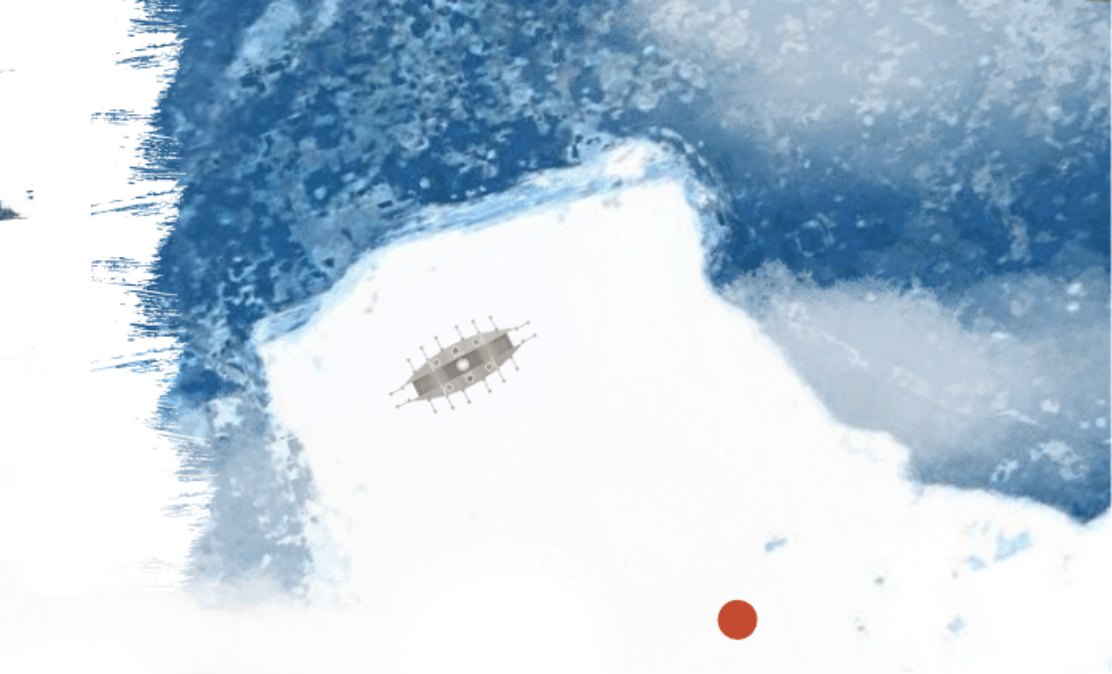


FONDATION
JACQUES ROUGERIE
GÉNÉRATION ESPACE MER
ACADÉMIE DES BEAUX-ARTS



GREENLAND

CANADA



LOCATED ON ELLESMERE ISLAND, GRISE FIORD IS ONE OF THREE PERMANENT SETTLEMENTS ON THE ISLAND.

GRISE FIORD IS A SMALL VILLAGE IN THE QIKIQTAAALUK.

KNOWN AS 'AUJUITTUQ' IN INUKTITUT, THIS WARMLY HOSPITABLE LITTLE HAMLET IS THE NORTHERNMOST COMMUNITY IN NUNAVUT AND CANADA.

THE LOCATION IS 1160 KILOMETERS NORTH OF THE ARCTIC CIRCLE. GRISE FIORD IS THE NORTHERNMOST CIVILIAN SETTLEMENT IN CANADA AND NORTH AMERICA.

76° 25' 03" N 82° 53' 38" O

DUE TO ITS REMOTE AND ISOLATED LOCATION NEAR THE TOP OF THE WORLD, IT IS A TIGHTLY KNIT COMMUNITY.

THE AIRSTRIP IS SHORT, SO ONLY MEDIUM SIZED AIRCRAFTS CAN LAND HERE, BUT WHEN VISITORS ARRIVE THEY ARE ALWAYS WELCOMED WITH BIG SMILES.



GRISE FIORD  PLACE THAT NEVER THAWS...

ARCTIC DAY INUIT



2023 PRIX DE LA FONDATION JACQUES ROUGERIE

Catégorie de Prix : ARCHITECTURE ET INNOVATION RELATED TO CLIMATE AND RISING WATER

Nom du projet

Description

ARCTIC DAY - INUIT

... THE ADVERSITIES THEY FACE, THE INTENSE COLD ... A TRIP THROUGH REGIONS OF ICE WAS A PROBLEM THAT AWAITED THEM.

CHARLIE CHAPLIN 1925



ARCTIC DAY INUIT

WILL PRESENT INNOVATIVE ARCHITECTURAL PROPOSALS ROOTED IN NUNAVUT'S DISTINCTIVE LAND, CLIMATE AND CULTURE, REFLECTING LOCAL TRADITIONS OF MIGRATION, MOBILITY AND SEASONALITY.

IT WILL ALSO EXPLORE HOW, IN LIGHT OF THE DRAMATIC ENVIRONMENTAL, SOCIAL AND ECONOMIC FORCES THAT ARE TRANSFORMING THE ARCTIC TODAY, ARCHITECTURE CAN HELP NURTURE STRONG, THRIVING AND VIBRANT NORTHERN COMMUNITIES.

THEY ORGANIZE THEMSELVES INTO COMMUNITIES WHERE HUMILITY PREDOMINATES. THEY LEARN EARLY ON TO LIVE TOGETHER IN ORDER TO SURVIVE. WHEN A WHALE IS HUNTED, EVERYONE HELPS, FROM FISHING, CUTTING AND DISTRIBUTION AMONG THEM.

REPRESENTING LESS THAN 2% OF THE POPULATION, INUIT COMMUNITIES PROTECT 40% OF THEIR COUNTRY'S BIODIVERSITY.



ENERGY WIND / SOLAR
 ALGAE AND FISH CULTURE
 EVENT SQUARE
 160 HM/H
 5 °C / -35 °C

CARIBOU CULTURE
 SUPPORT AREAS

LEVEL: 16.00

LEVEL: 11.75

LEVEL: 7.50

LEVEL: 4.75

ARCTIC COMMUNITIES FACE POWERFUL FORCES THAT PUT PRESSURE ON INDIGENOUS LANDS AND PEOPLES.

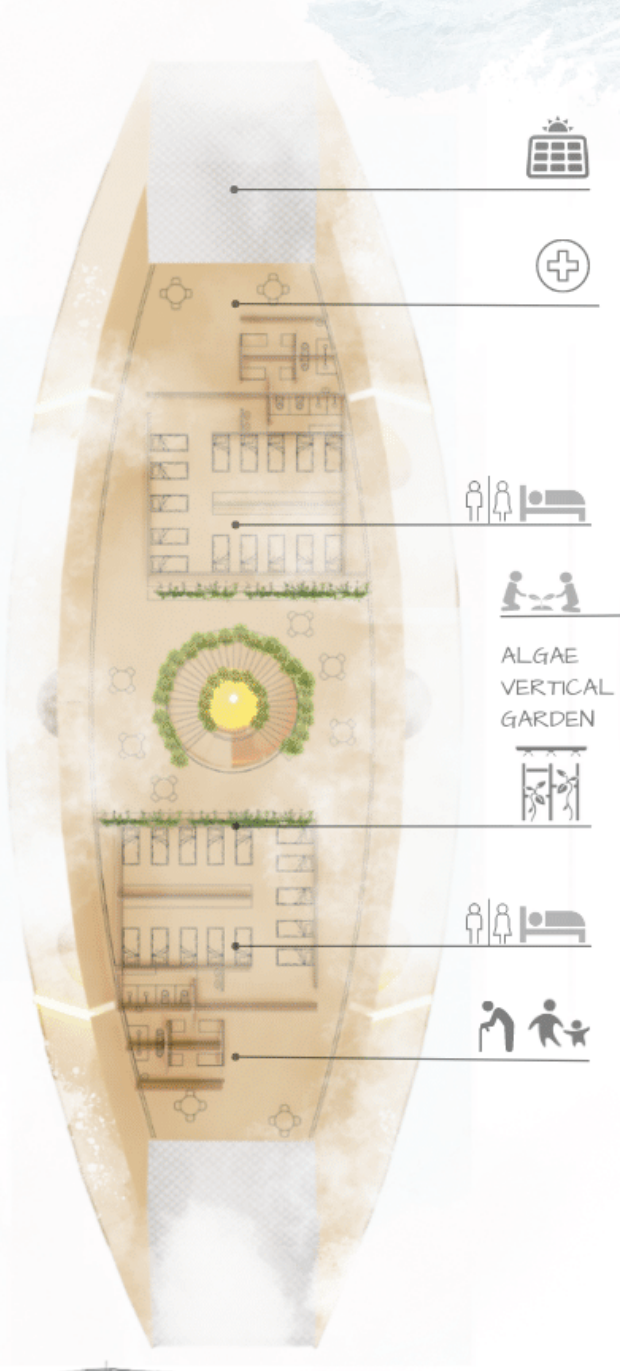
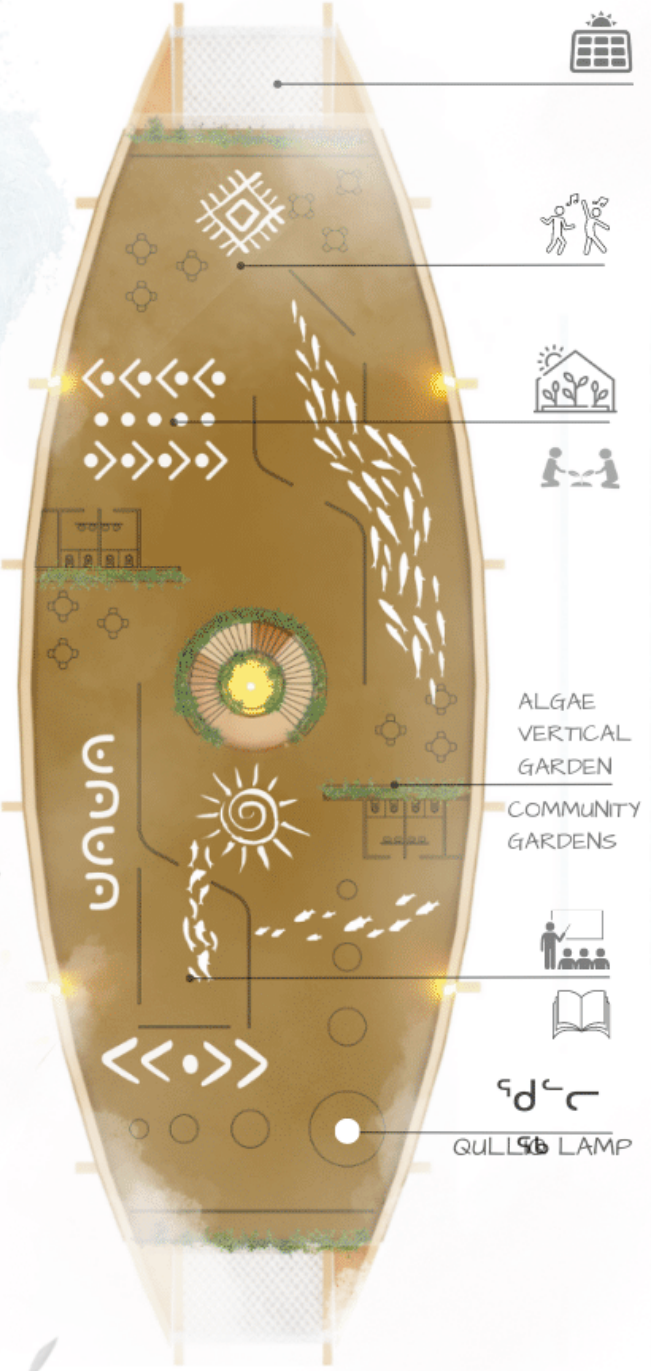
CLIMATE CHANGE AFFECTS LIFE IN ARCTIC, ITS SENSITIVE ECOSYSTEMS AND THE COMMUNITIES THAT DEPENDS ON THE REGION'S NATURAL RESOURCES. QUESTIONS RELATED TO THE FUTURE ARE MANY AND DIVERSE. THE INUIT ARE AT THE FOREFRONT OF THESE ISSUES.

NOWHERE THE EFFECTS OF GLOBAL WARMING ARE MORE VISIBLE THAN IN NORTHERN CANADA'S FRAGILE ECOLOGIES, WHICH TRADITIONALLY KEEP LOCAL PEOPLE IN A DELICATE BALANCE WITH NATURE.

THE INSPIRATION WAS A KAYAK THAT PRESERVES AND REVIVES THE MEMORY OF INUIT CULTURE.

CELEBRATING THE COMMUNITY'S RICH HERITAGE AND WAY OF LIFE, THE LARGE CURVED STRUCTURE SHELTER WITHIN IT FACILITIES TO PRESERVE THE REGION'S RICH MARINE LIFE AND BIODIVERSITY, ALONG WITH DISTINCTIVE TOURIST EXPERIENCES.

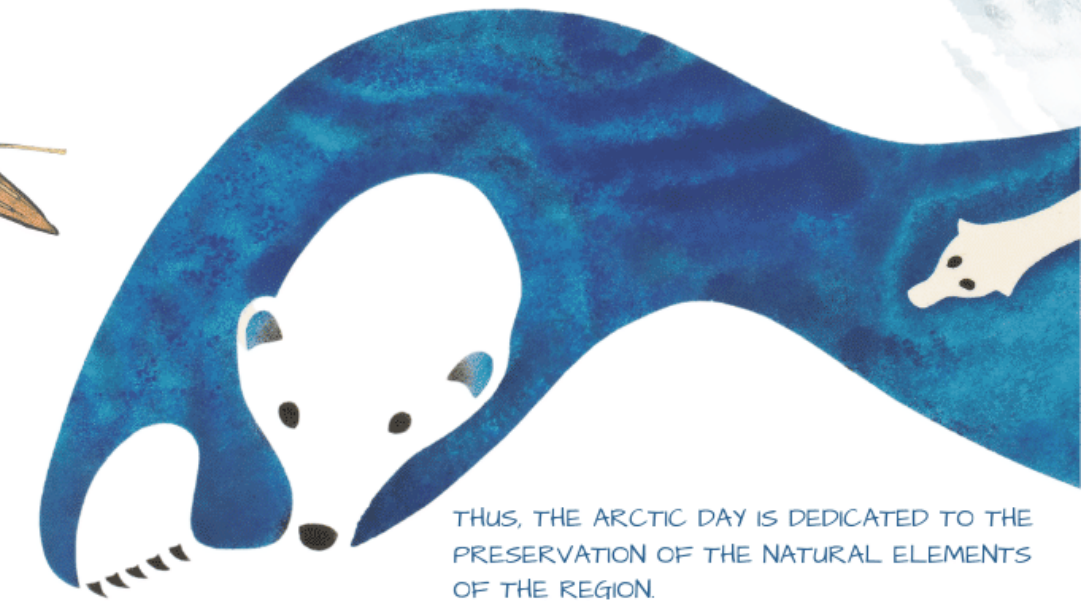
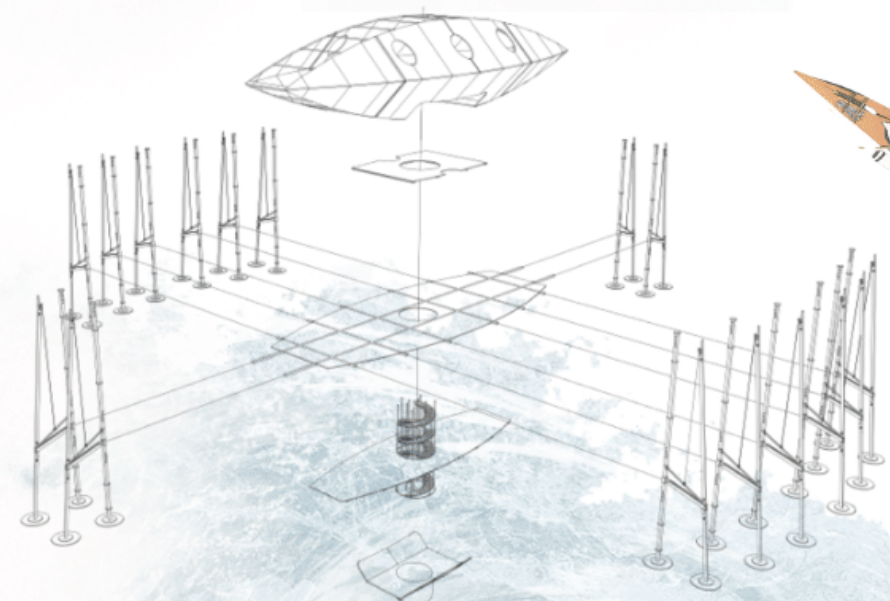
STIMULATE THE VISITOR'S EXPERIENCE, WHERE ARCHITECTURE AND NATURE MERGE INTO A UNIQUE ECOSYSTEM.



ACCOMMODATION: 25 PEOPLE IN WINTER AND 60 IN SUMMER.

COMPRISES FOUR LEVELS.

- 4.75 - ACCESSES, DEPOSITS, BIOENERGY, HEATING.
- 7.50 - BEDROOMS AND SERVICES.
- 11.75 - QULLIQ, EXHIBITION, EDUCATION AND CULTURE
- 16.00 - KITCHEN, MEAL



THUS, THE ARCTIC DAY IS DEDICATED TO THE PRESERVATION OF THE NATURAL ELEMENTS OF THE REGION.

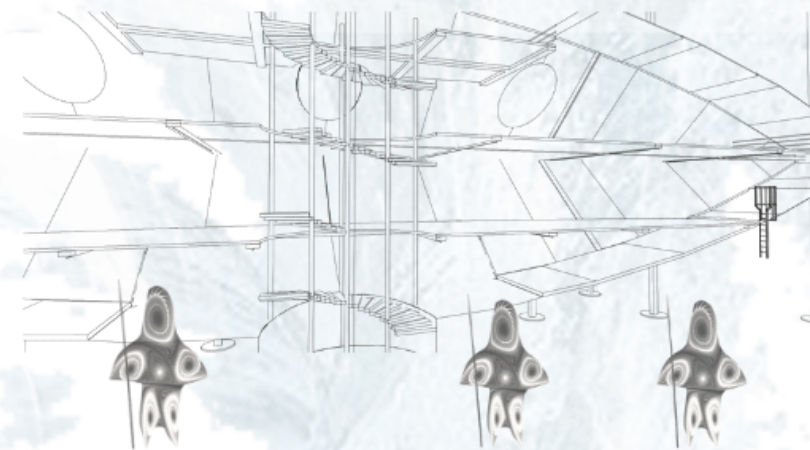
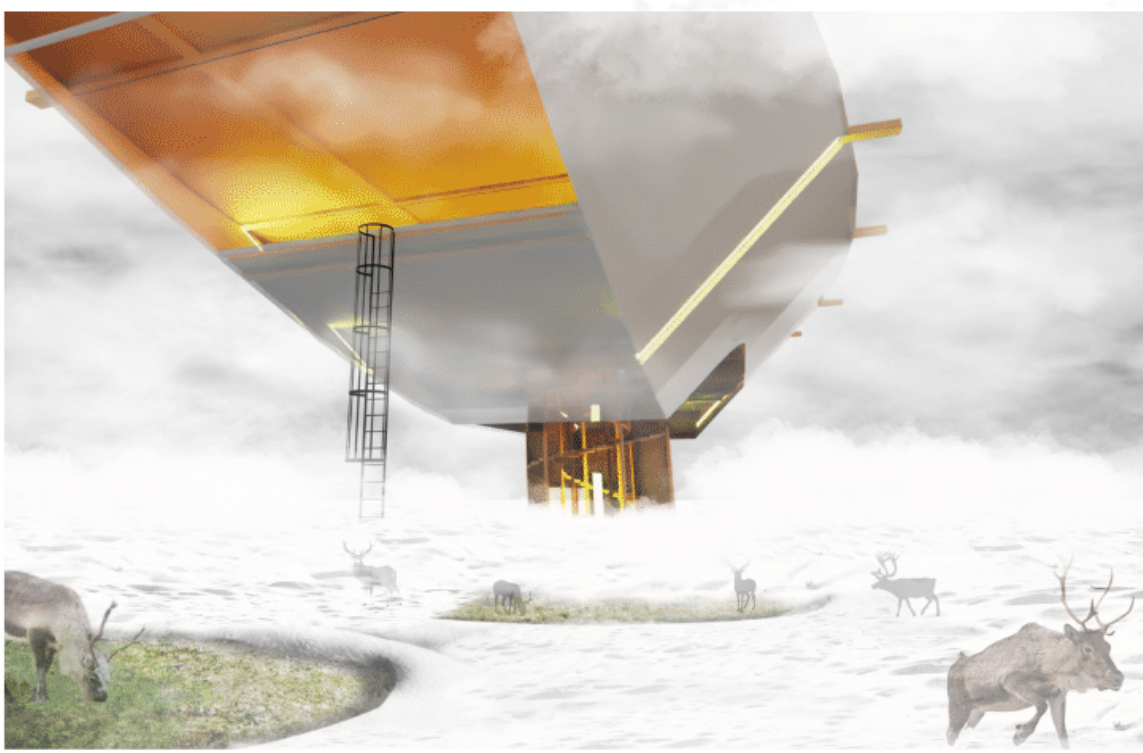
ARCTIC DAY - INUIT ARE PROPOSED TO EXIST ALONG WINTER TRAILS THROUGH NUNAVAT TERRITORY, LINKING COMMUNITIES AND ECOLOGIES. SOME INUIT STILL MAINTAIN NOMADIC HABITS. . . THEY ARE VERY AWARE OF THE ECONOMIC POTENTIAL OF TOURISM ON THEIR LAND. THIS LEADS US TO PROVIDING A SECURE NETWORK, WHICH SEEKS TO COMBINE NEW TECHNOLOGIES WITH TRADITIONAL PRACTICES TO SUPPORT AN EMERGING ECONOMY.

THE PROJECT HAS A VARIETY OF CUSTOMIZABLE ARCHITECTURES AND INTERVENTIONS FOR EACH COMMUNITY. THE MAIN SUPPORT AREAS OF THE FACILITIES WILL BE COUPLED AND INTERCHANGEABLE FOR EACH PLACE IN WHICH THEY ARE LOCATED, SUCH AS: FISH AND SEAWEED FARMING, FOOD STORAGE AND PREPARATION, SMOKED PLACES, COMMERCIAL WAREHOUSES AND CARIBOU BREEDING. THE SUPPORT AREAS WILL BE BUILT USING TRADITIONAL IGLU TECHNIQUES AND MATERIALS. . . SNOW IS CONSIDERED A BUILDING MATERIAL.

 ALGAE AND FISH CULTURE

 CARIBOU CULTURE

DESPITE CANADA'S MOVEMENT TOWARDS RECONCILIATION WITH THE INUIT, THERE HAS BEEN A DEARTH OF FACILITIES DEDICATED TO INDIGENOUS WELL-BEING IN THE ARCTIC TERRITORIES. FOR THIS PURPOSE, THE PROJECT WILL FOCUS ON REVITALIZING TRADITIONAL MEDICINE, THE ELDERLY AND YOUTH CARE, EDUCATION AND CULTURE OF THE INUIT PEOPLE. . .



IN WINTER IT MAY CONTAIN CARIBU FARMS, IN ADDITION TO HUNTING AND FISHING; IN SPRING IT WILL INTEGRATE MARINE FARMING, ALGAE AND FISH CULTIVATION.

AN ARCHITECTURE BASED ON AND ADAPTED TO CLIMATE CONDITIONS, RESCUING THE MEMORY AND WAY OF LIFE OF THE INUIT PEOPLE.

IN SOME INDIGENOUS COMMUNITIES, CARIBOU HAVE BEEN PART OF THE CULTURE FOR MILLENNIA, WHERE THEY PLAY AN INTEGRAL ROLE IN MANY ANCIENT TRADITIONS.

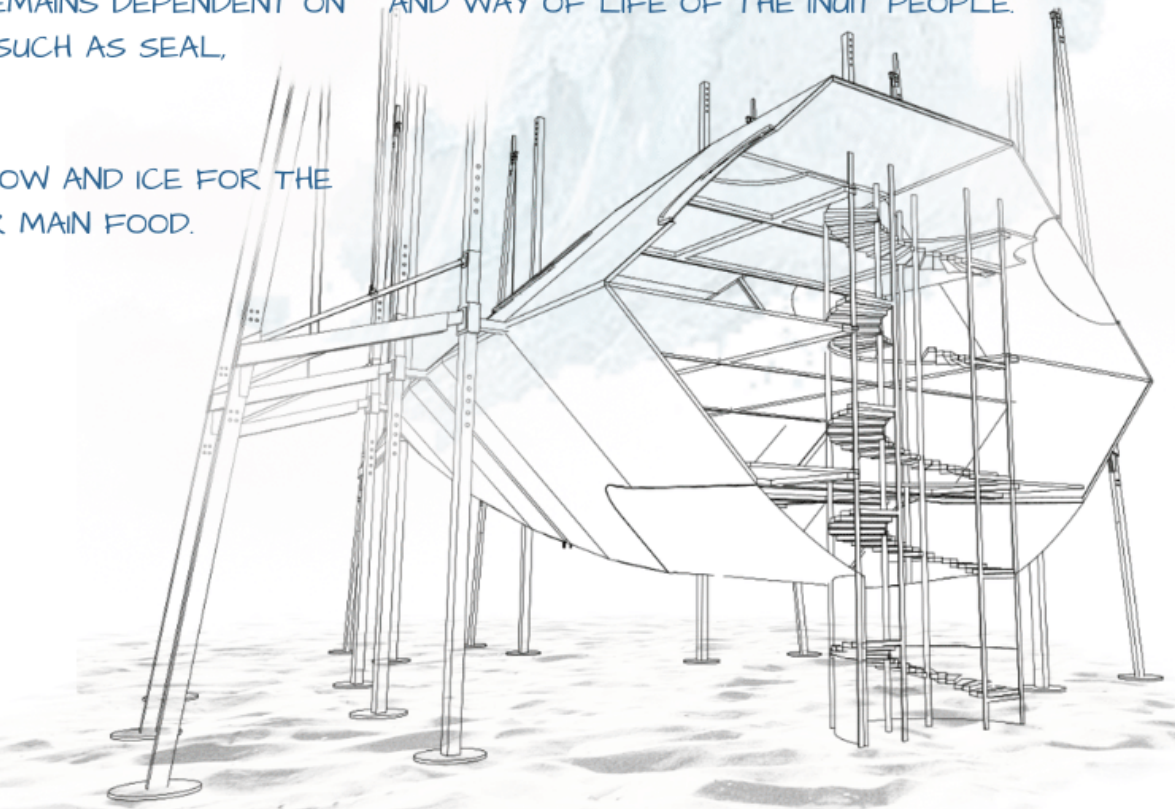
A SIGNIFICANT SOURCE OF THE INUIT DIET STILL REMAINS DEPENDENT ON THE SUBSISTENCE HUNTING OF LARGE MAMMALS SUCH AS SEAL, WALRUS AND CARIBOU.

FOR THE INUIT PEOPLE, THE IMPORTANCE OF THE CARIBOU GOES FAR BEYOND THE MATERIAL REALM. THIS ANIMAL IS AT THE BASE OF ITS HISTORY; IT IS A SYMBOL OF THEIR CULTURE.

WE CREATE A MICROCLIMATE OR AN OASIS OF SNOW AND ICE FOR THE CARIBOU TO FIND ARCTIC MOSS AND LICHEN, THEIR MAIN FOOD.



IN THE ARCTIC, THE ARRIVAL OF SPRING MARKS THE END OF THE LONG, DARK WINTER AND THE BEGINNING OF A NEW SEASON.



THE ICE STARTS TO BREAK UP, PLANTS START TO BLOOM AND ANIMALS START TO MIGRATE, OFFERING NEW OPPORTUNITIES FOR TRAVEL, HUNTING AND GATHERING.

SPRING IS A TIME OF HOPE, GROWTH AND RENEWAL, AS WELL AS A TIME TO HONOR AND CONNECT WITH THE NATURAL WORLD AND THE SPIRITS THAT GOVERN IT.



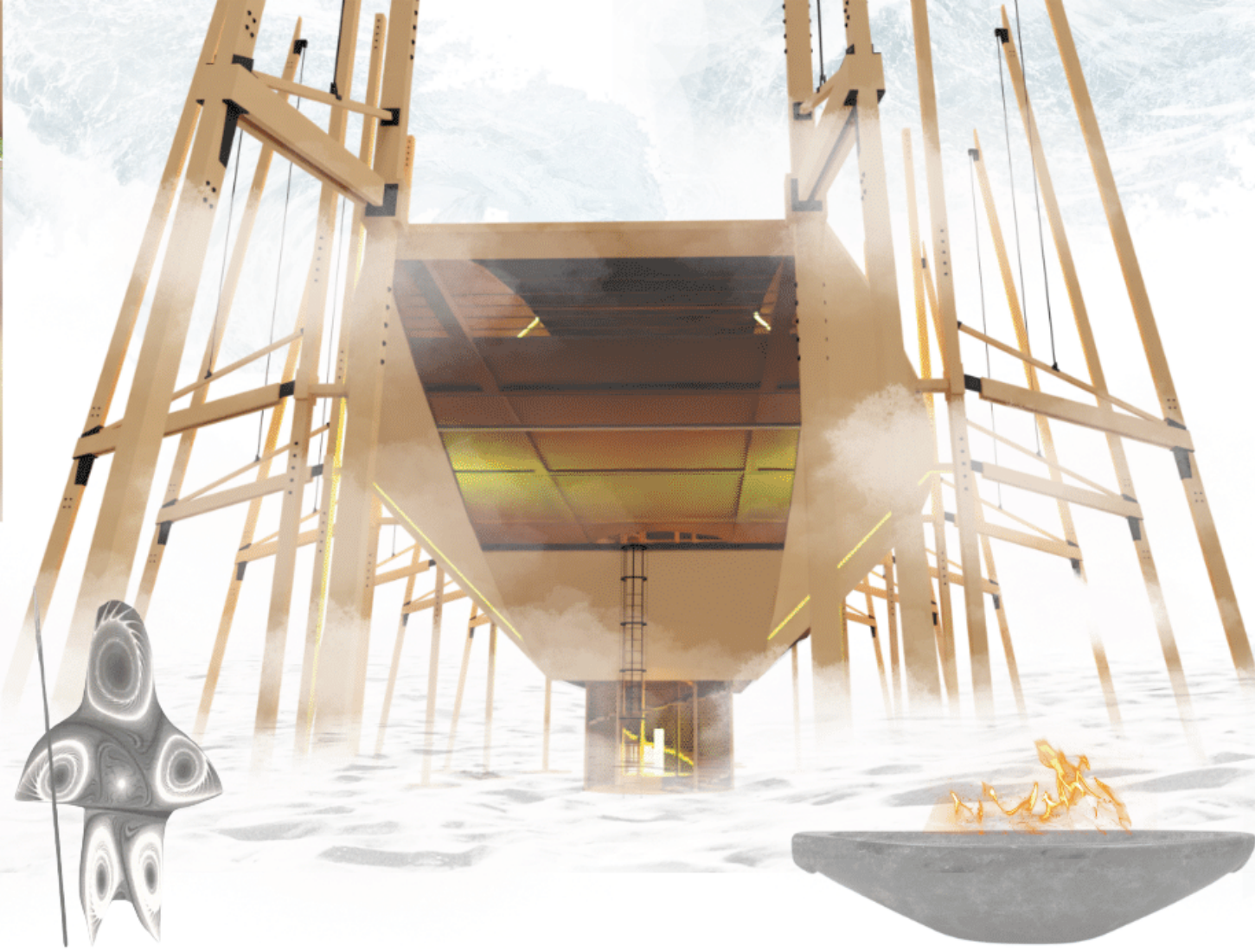
LARGE OPEN INTERIOR SPACES, ADAPTED TERRACED FLOORS AND A SPIRAL STAIRCASE; THEY ARE THE ARCHITECTURAL BASIS FOR THE CONSTRUCTION OF ARCTIC DAY, FORMING ATRIUMS OF CONCAVE AND CONVEX WINDOWS; CREATING A WONDERFUL PLAY OF LIGHT AND SHADOW.

ROOFS AND WINDOWS WITH INDEPENDENT SOLAR THERMAL AND PHOTOVOLTAIC SHIELDS CAN BE CUSTOMIZED FOR BETTER PERFORMANCE TO BECOME POSITIVE ENERGY BUILDINGS WHILE EXCESS PRODUCTION IS STORED IN BATTERIES.

THE THERMAL PANELS SERVE TO MELT THE SNOW AND HEAT THE WATER THAT WILL BE CONSUMED IN THE SEASON.

THE OPEN FRAME DESIGN WITH NO INTERNAL COLUMNS ALLOWS FOR FLEXIBLE LAYOUTS AND AN EVEN WIDER VIEW OF THE BEAUTIFUL ARCTIC LANDSCAPES.

PERPENDICULAR TO THE PREVAILING WIND, SO SNOW ONLY FORMS ON THE LEEWARD SIDE. THIS LEAVES THE WINDWARD SIDE FREE OF DRIFT AND CREATES A HARD, ICY SURFACE ON WHICH VEHICLES AND PEOPLE CAN MOVE MORE EASILY. THE OVAL SHAPE IS VERY IMPORTANT, ONCE THE SNOW THAT FALLS ON THEM WILL SLIDE SIDWAYS, AVOIDING WEIGHT OVERLOAD.



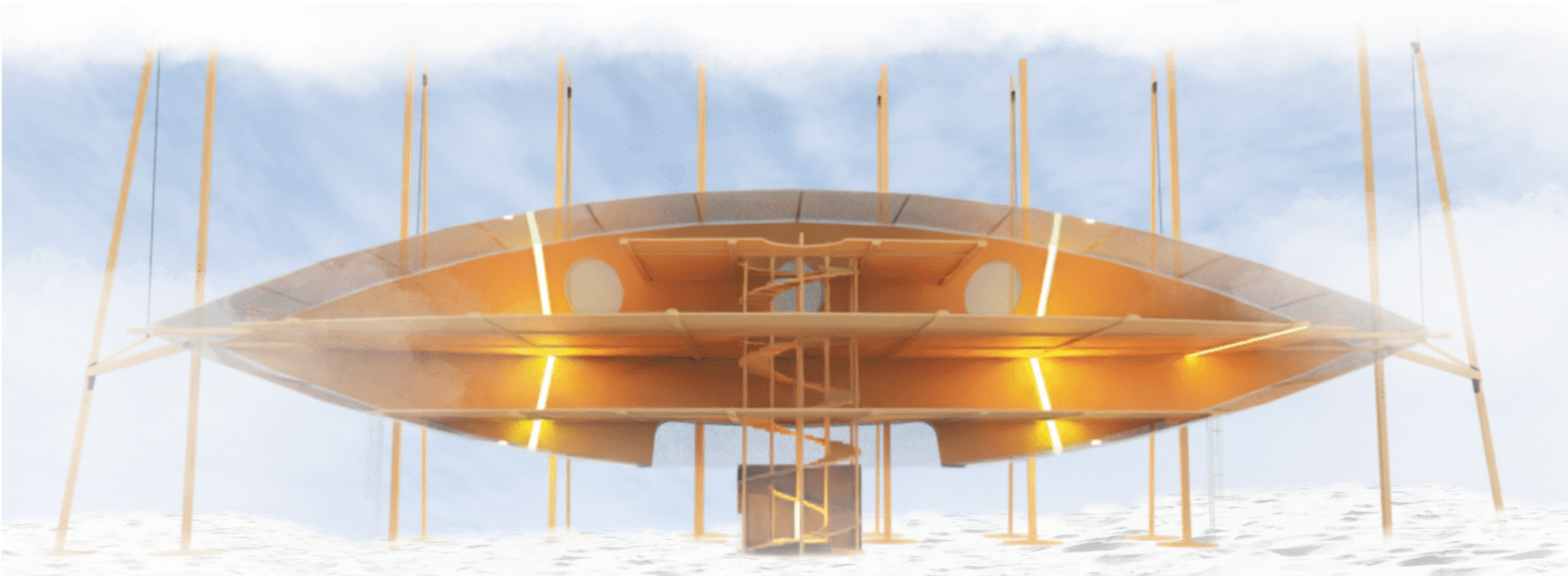
IN THE ACCESS, A LARGE HEATER IN THE CENTER OF THE STAIRS REMINDS A QULLIQ LAMP (A SOURCE OF LIFE).

SEAL OIL LAMPS PROVIDED HEAT AND LIGHT IN THE ARID ARCTIC ENVIRONMENT.

IT HAS A VERY STRONG SYMBOLIC AND CULTURAL MEANING THAT IS EVEN PRESENTED ON THE COAT OF ARMS OF NUNAVUT.

THIS LAMP IS THE MOST IMPORTANT PIECE OF FURNITURE FOR THE INUIT IN THEIR HOMES.

LAMP REINTERPRETATION: REACHING A POPULAR DIMENSION, A COLLECTIVE IDEAL AND AN ANCESTRAL IMAGINATION.



THE PURPOSE OF ARCTIC DAY IS TO PROMOTE SOLUTIONS IN THE FIELD OF FUTURE GREEN TECHNOLOGIES TO SUPPORT LIFE AND MAINTAIN SETTLEMENTS IN THE ARCTIC.

THE STRUCTURES AND INTERNAL WALLS ARE BUILT WITH 3D PRINTING BIOTECHNOLOGY, AND USE LIGHTER AND MORE RESISTANT MATERIALS (SYNTHESIZED CHITIN FIBER, A MOLECULE THAT FORMS THE SHELL OF CRUSTACEANS), AND A METHOD SIMILAR TO QAMUTIK (SLED) AND UMIAK (CANOE).

THE COATING OF THE EXTERNAL WALLS IS IN 3 LAYERS WITH A THICKNESS OF 40 CM. RECYCLED PLASTIC, POLYSTYRENE BIO OBTAINED FROM SEAWEED, RECYCLED WOOD.

TO ACCLIMATIZE, WE USE MICROALGAE GROWN IN VERTICAL GARDENS THAT ABSORB THE CARBON DIOXIDE RELEASED BY THE BREATH OF THE INHABITANTS. THESE ALGAE BIOREACTORS ALSO HELP TO RECYCLE OUR ORGANIC WASTE AND PRODUCE ENERGY THROUGH PHOTOSYNTHESIS AND BIOMETHANIZATION.

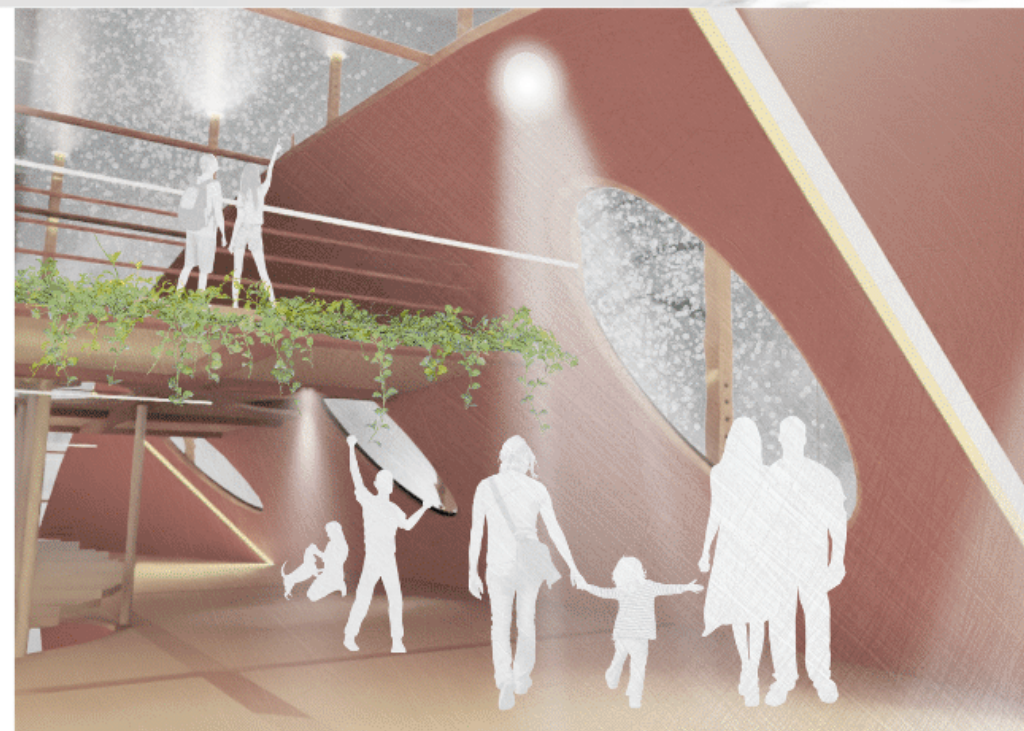
IN HIGH WINDS, THE KAYAK'S STREAMLINED SHAPE NATURALLY ANCHORS SHELTER TO THE GROUND WHILE DISSIPATING WIND FORCES TO AVOID ANY GREENHOUSE EFFECT, AT THE TOP OF THE PILLARS THERE IS A NATURAL AIR FLOW THAT IS CONNECTED BY DUCTS TO THE MAIN BODY, WHICH IMITATES A WIND-POWERED CHIMNEY.

HEAT PROPAGATION IS BASED ON THE REINTERPRETATION OF THE "QULLIP" LAMP AT THE BASE OF THE STAIRS, WHICH WORKS SIMILARLY TO THE INSIDE OF A TERMITE MOUND, ENSURING EXCELLENT HEATING PERFORMANCE ON THE OTHER FLOORS.

THE IDEAL INTERIOR DESIGN, WE CONSIDER ARCHITECTURAL TOOLS THAT COULD ENHANCE THE LIVING EXPERIENCE AND PROVIDE SUPPORT DURING THE LONG, DARK WINTERS. THIS WAS DONE THROUGH THE APPLICATION OF LIGHT, SPACE, VOLUME, COLOR AND EVEN SMELL. AN ARCHITECTURE CHARACTERIZED BY SYMMETRY, STRONG LINE LAYOUTS AXIAL VIEWS AND USE OF VEGETATION (ALGAS, INDOOR GARDENS) IN LARGE QUANTITIES.



AQUAPONICS AND PERMACULTURE PRODUCE UP TO 25 KG OF FRUITS AND VEGETABLES PER SQUARE METER PER YEAR.



2023 PRIX DE LA FONDATION JACQUES ROUGERIE
Catégorie de Prix : GRAND PRIX AWARD SEA LEVEL RISE

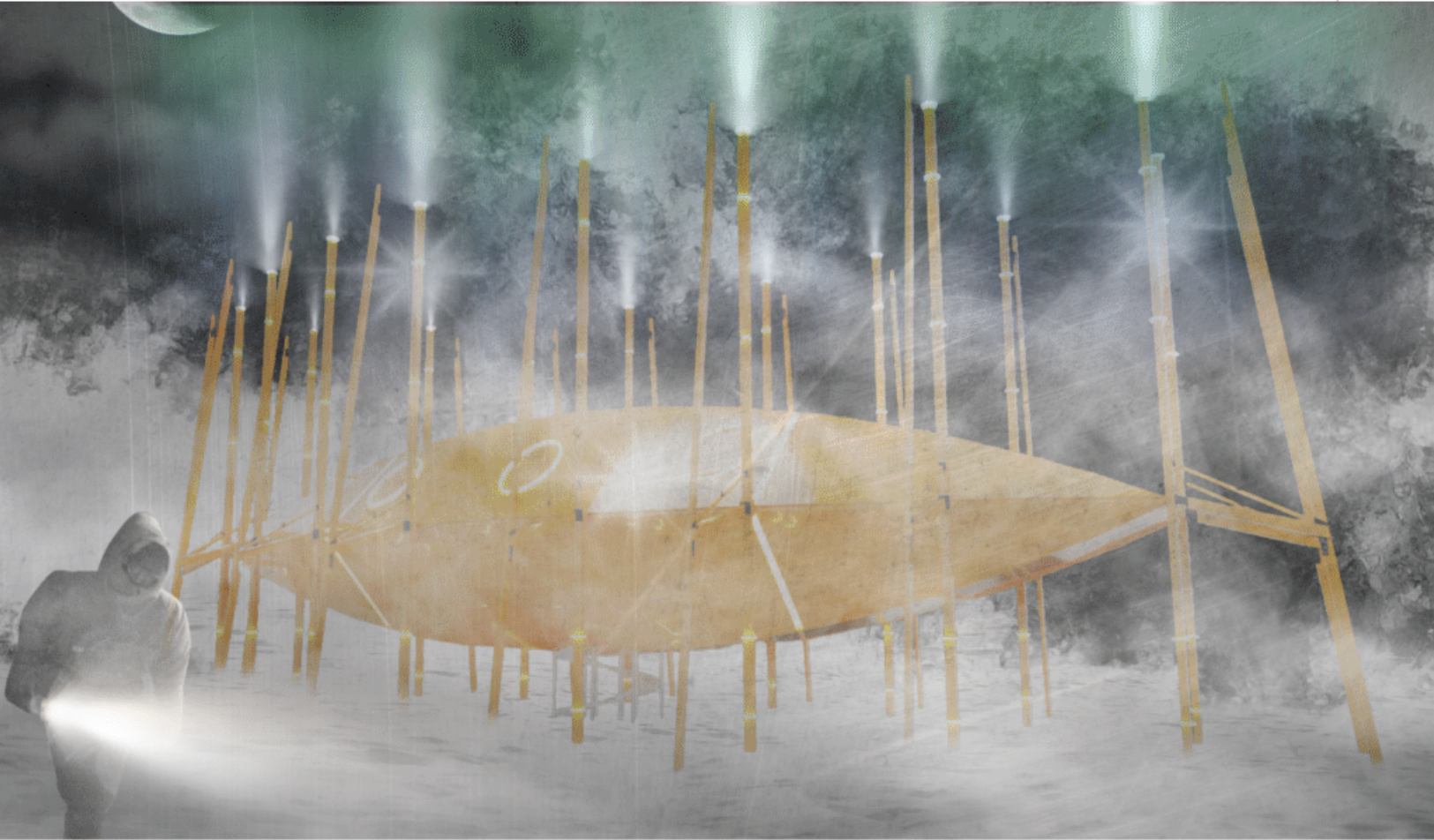
Nom du projet
Description

ARCTIC DAY - INUIT

... THE ADVERSITIES THEY FACE, THE INTENSE COLD ... A TRIP THROUGH REGIONS OF ICE WAS A PROBLEM THAT AWAITED THEM.

CHARLIE CHAPLIN 1925





THE STRUCTURE WAS INSPIRED BY VERNACULAR ARCHITECTURAL REFERENCES TO TRADITIONAL INUIT FISHING HOOKS. THESE REFERENCES ENSURE THAT THE BUILDING HAS A MINIMAL FOOTPRINT AND GIVES IT AN ALMOST TRANSPARENT APPEARANCE.

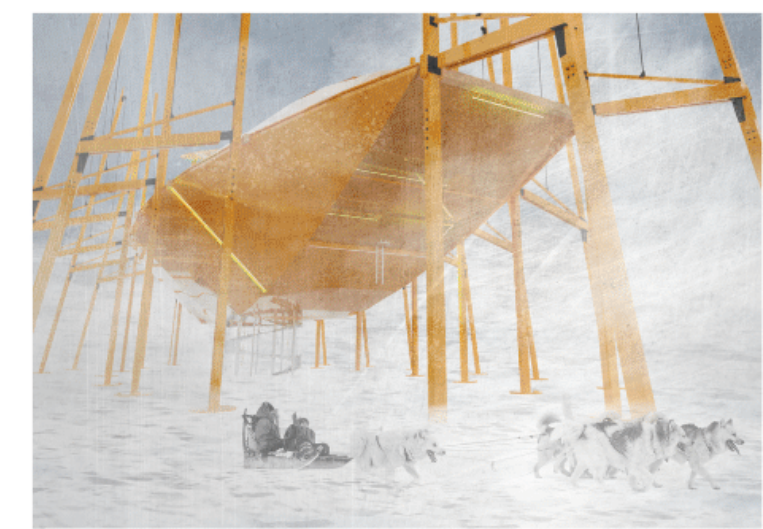
SUPPORTED BY 16 PILOTIS THAT WORK LIKE PISTONS IN A HYDRAULIC LIFT, WHICH LIFT IT TO KEEP IT ABOVE THE SNOW. THERE ARE GIANT RETRACTABLE SKIS AT THE BOTTOM, WHICH ALLOW THE BUILDING TO BE RELOCATED.

DESIGN ELEMENTS SOLUTIONS INCLUDED COLORS TO CREATE A SPECIAL PALETTE TO COMPENSATE FOR DARK DAYS, ALARM CLOCKS WITH DAYLIGHT SIMULATION LAMPS TO SOLVE BIORHYTHM ISSUES, USE OF SPECIAL WOODEN SLATS TO INFUSE NATURE, AS WELL AS SPACE PLANNING TO MEET THE NEEDS OF SOCIAL INTERACTION AND LIFE ISSUES AND WORKING IN ISOLATION.

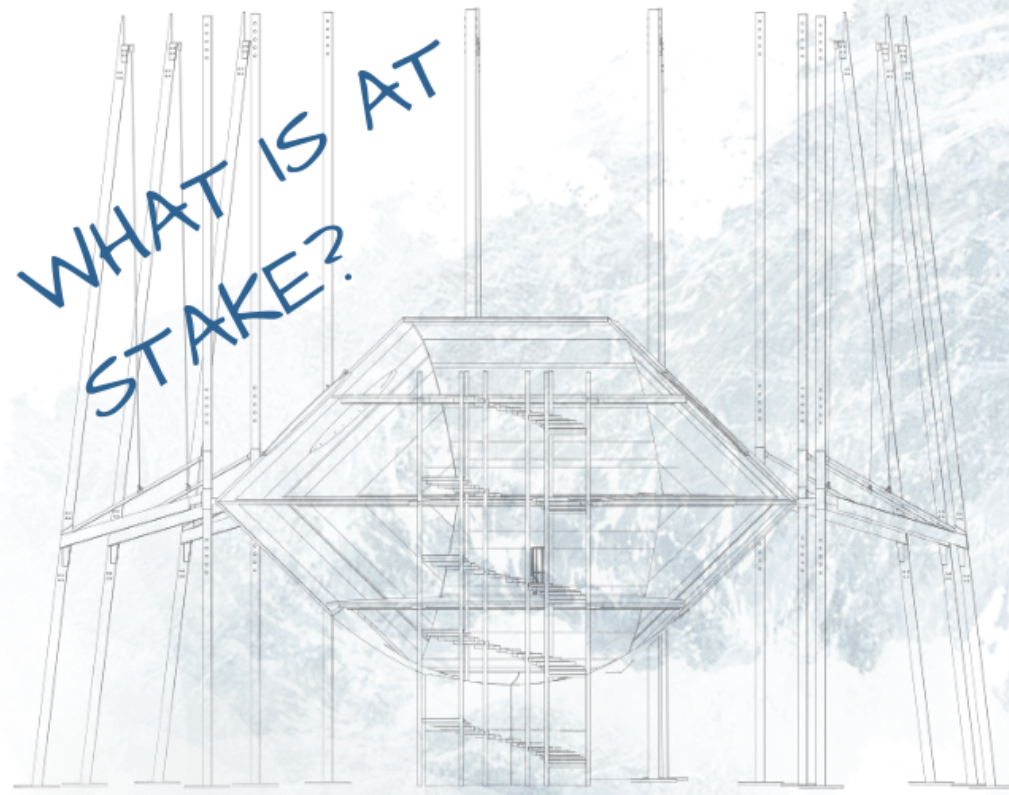
THE BUILDING WAS DESIGNED TO SEAMLESSLY FLOW INTO THE LANDSCAPE, ALLOWING VISITORS TO EASILY ACCESS AND ENJOY THE SURROUNDING NATURAL BEAUTY. BY CREATING AN ACCESSIBLE ROOF, PROVIDING BREATHTAKING VIEWS OF THE LANDSCAPE AND SKY.

THE BUILDING ALSO ACTS AS A LANTERN ON DARK ARCTIC NIGHTS, PROVIDING A BEACON OF LIGHT AND A WARM, WELCOMING FEELING FOR GUESTS AND PASSERS-BY.

GRAY WATER IS BIOLOGICALLY RECYCLED INTO WASTE STABILIZATION PONDS, WHILE ORGANIC WASTE IS RECYCLED INTO BIOMASS



WHAT IS AT
STAKE?



AS THE EARTH WARMS, MELTING ARCTIC ICE WILL LEAD TO RISING SEA LEVELS, WHICH WILL WREAK CATASTROPHIC HAVOC.

WHAT HAPPENS IN THE ARCTIC DIRECTLY AFFECTS THE REST OF THE PLANET.

THAT'S ONE OF THE REASONS WE MAKE PROTECTING THIS AMAZING PLACE AND THE ANIMALS THAT INHABIT.

FOR HUNDREDS OF YEARS THEY HAVE SURVIVED THE HARSHTEST CONDITIONS IN THE WORLD. THIS HAS ALWAYS BEEN THEIR WAY OF LIFE.

BUT NOW IT'S CHANGING. THE INUIT WERE ISOLATED FOR MILLENNIA, UNTIL MODERN TIMES.

TODAY THEIR LIVES ARE AFFECTED BY A CONTEMPORARY WORLD THAT IS PUTTING LIMITS ON HOW THEY CAN HUNT AND A CHANGING CLIMATE THAT IS AFFECTING THEIR ENVIRONMENT. THERE IS AN ELEMENT OF UNCERTAINTY IN THEIR CULTURE.



THE ARCTIC DAY AIMS TO EDUCATE VISITORS AND INSPIRE INNOVATIVE PRESERVATION SOLUTIONS FOR INUIT CULTURE AND THE WORLD'S NATURAL RESOURCES.

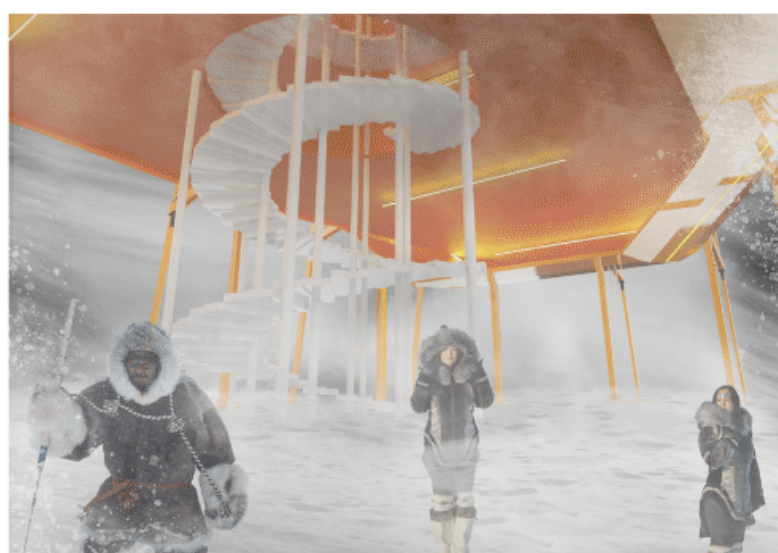
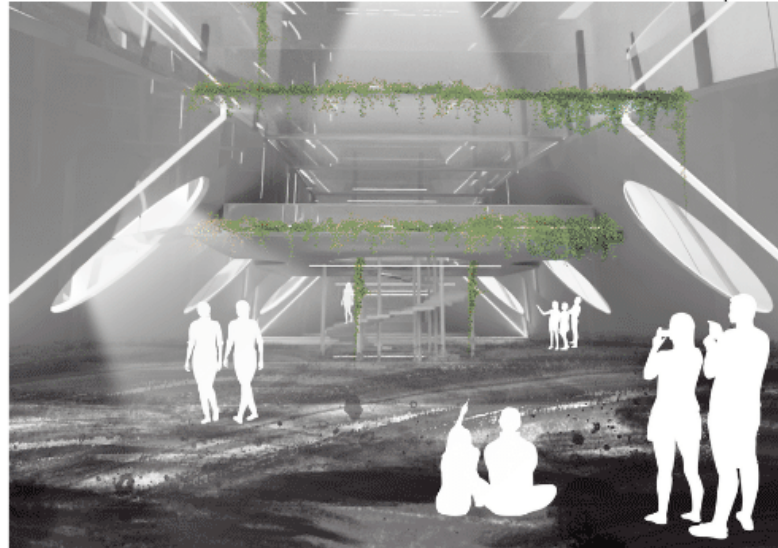
IT FURTHER EMPHASIZES THE VALUE OF THE UNIQUE CLIMATE AND POLITICAL INSTABILITY THAT LIES BEYOND THE ARCTIC CIRCLE, SERVING AS A REMINDER OF HOW WE MUST CARE FOR THE WORLD'S RESOURCES FOR FUTURE GENERATIONS.

TRADITION UNDER TENSION

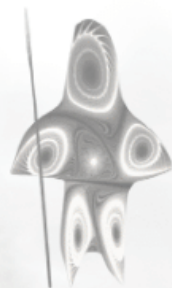
THE ARCTIC IS WARMING TWICE AS FAST AS THE REST OF THE WORLD AVERAGE. AS ICE AND SNOW MELT, OCEAN LEVELS RISE, WHILE EARTH ABSORBS MORE SUNLIGHT AND GETS WARMER.

FOR THE ARCTIC AND ITS 4 MILLION PEOPLE, CLIMATE CHANGE IS NOT A FUTURE THREAT, BUT A CURRENT REALITY OF COASTAL EROSION, FLOODING, WILDFIRES, DECLINING FISHERIES AND CHANGES IN WILDLIFE MIGRATION ROUTES.

... THE INUIT CONTINUE TO EAT THEIR TRADITIONAL DIET OF SEALS, WALRUSES AND REINDEER. IN THE CONSTRUCTION OF THEIR CLOTHES AND BOOTS, SOME TRADITIONAL ONES ESCHEW CONTEMPORARY MATERIALS AND CONTINUE TO USE THE SPOILS OF THEIR HUNT - POLAR BEAR AND REINDEER SKINS, AS THEY ALWAYS DO.



INUIT



TAKE CARE FOR EACH OTHER AND FAMILY TIES ARE STRONG. ALL ARE TREATED AS EQUALS, REGARDLESS OF THEIR PHYSICAL CONDITION. THE NECESSITIES OF LIFE ARE SHARED WITH THOSE LESS FORTUNATE TO ENSURE SURVIVAL. CHILDREN ARE TAUGHT BY THEIR PARENTS TO TREAT OTHERS THE WAY THEY WOULD LIKE TO BE TREATED - WITH RESPECT.

THEY ALSO LEARN THE QUALITIES OF DISCIPLINE AND ENDURANCE TO SURVIVE THE ARCTIC CLIMATE. THE FAMILY IS STILL A SIGNIFICANT PART OF NORTHERN LIFE.

BY HAVING A CULTURE OF SHARING, THE INUIT HAVE SURVIVED FOR THOUSANDS OF YEARS. TO THIS DAY, THE INUIT STILL SHARE MANY THINGS WITH OTHERS: FOOD, POSSESSIONS, THOUGHTS AND WORDS. TRADITIONALLY, THEIR HOUSES ARE ALWAYS OPEN, AND YOU ARE ONLY EXPECTED TO ENTER. IT'S HARD TO IMAGINE THEM CRASHING INTO AN IGLOO!

INUIT SURVIVAL DEPENDS ON LIVING IN BALANCE WITH THE LAND, PEOPLE AND RESOURCES. THE INUIT HAVE GREAT RESPECT FOR ALL PEOPLE, THE ENVIRONMENT AND ALL LIVING CREATURES.

THE INUIT HAD TO BE DISCIPLINED, PRACTICAL, PATIENT AND, ABOVE ALL, RESPONSIBLE FOR SURVIVING THE ELEMENTS OF THE ARCTIC CLIMATE.

ARCTIC DAY INUIT

- FINANCIAL TIMES
- WWF
- JUNEAU EMPIRE
- POLAR PD
- BC CAMPUS
- WIKIPEDIA
- BEHANCE
- NDLA
- WWW.HERITAGE.NF.CA
- NYTIMES
- THEGUARDIAN
- DEZEEN
- CNN
- NASA.GOV
- NATIONAL GEOGRAPHIC
- ITKCA
- INUITARTFOUNDATION
- GOV.NU.CA
- CBC.CA
- EVOQ
- OCEAN WIDE
- IPCD
- BAS.AC.UK
- ADN.COM
- CAFF.IS
- ICCA
- POLAR ARCHITECTURE: THE RESEARCH BASES BUILT USING GREEN IDEAS
- SAVING THE ARCTIC
- TRADITIONAL HALIBUT HOOK INDUCTED INTO ALASKA HALL OF FAME
- THE INUIT PEOPLE
- INUIT, ARCTIC WETLANDS: RESILIENCE & MANAGEMENT
- TERRITORIAL CLAIMS IN THE ARCTIC, NUNAVIK, INUIT, POLAR ARCTIC, ARCH. ARTIC, KAYAKBAS.AS.UK
- POLAR ARCTIC,
- CANADA - THE TALE OF THE INUIT AND THEIR LAND
- PRECONTACT INUIT LAND USE
- ARTIC POLAR
- THE WHITE FRONTIER: INUIT LIFE IN 1900S CANADA - IN PICTURES
- ARCTIC
- LARGE GLACIER MELTS WITH TIDE AND REVEALS FASTER SEA LEVEL RISE
- ARCTIC, INUIT,
- LARGE GLACIER MELTS WITH TIDE AND REVEALS FASTER SEA LEVEL RISE
- INUIT PEOPLE CULTURE
- ART CULTURE
- ARTIC, INUIT NUNAVAT... CIRCUMPOLAR BIODIVERSITY MONITORING PROGRAMME (CBMP)
- CANADA'S NORTHERNMOST COMMUNITY SEEKS PM'S HELP TO WEATHER CLIMATE CHANGE
- ART ARCH. ARTIC
- THE WORLD IS CHANGING FOR GREENLAND'S NATIVE INUIT PEOPLE
- THE QULLIQ - A LIFE SOURCE
- STATION ARTIC, ARCTIC BIODIVERSITY ASSESSMENT
- ARCTIC ** "INDIGENOUS PEOPLES, BIODIVERSITY AND THEIR INTERRELATED NATURE
- STATE OF THE ARCTIC FRESHWATER BIODIVERSITY REPORT, STATE OF THE ARCTIC MARINE BIODIVERSITY REPORT, STATE OF THE ARCTIC TERRESTRIAL BIODIVERSITY REPORT,
- INUIT CIRCUMPOLAR COUNCIL-ALASCA, CIRCUMPOLAR INUIT PROTOCOLS FOR EQUITABLE AND ETHICAL ENGAGEMENT, ICC ARCTIC POLICY, INDIGENOUS KNOWLEDGE, "ARCTIC CHANGE - WHAT'S NEXT?"