

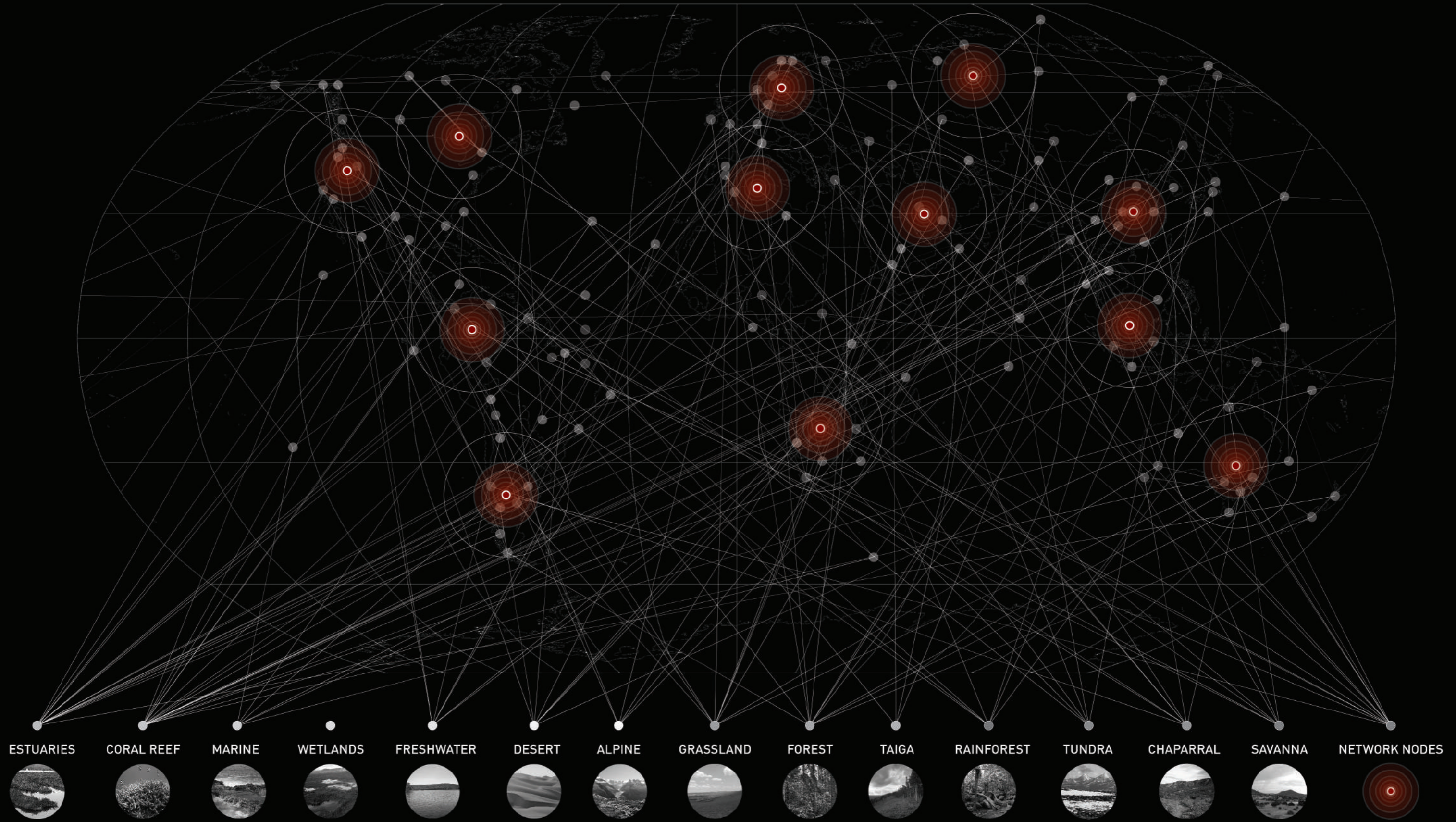
## THE TERRA CHRONICLES AN ARCHIVE OF LIFE

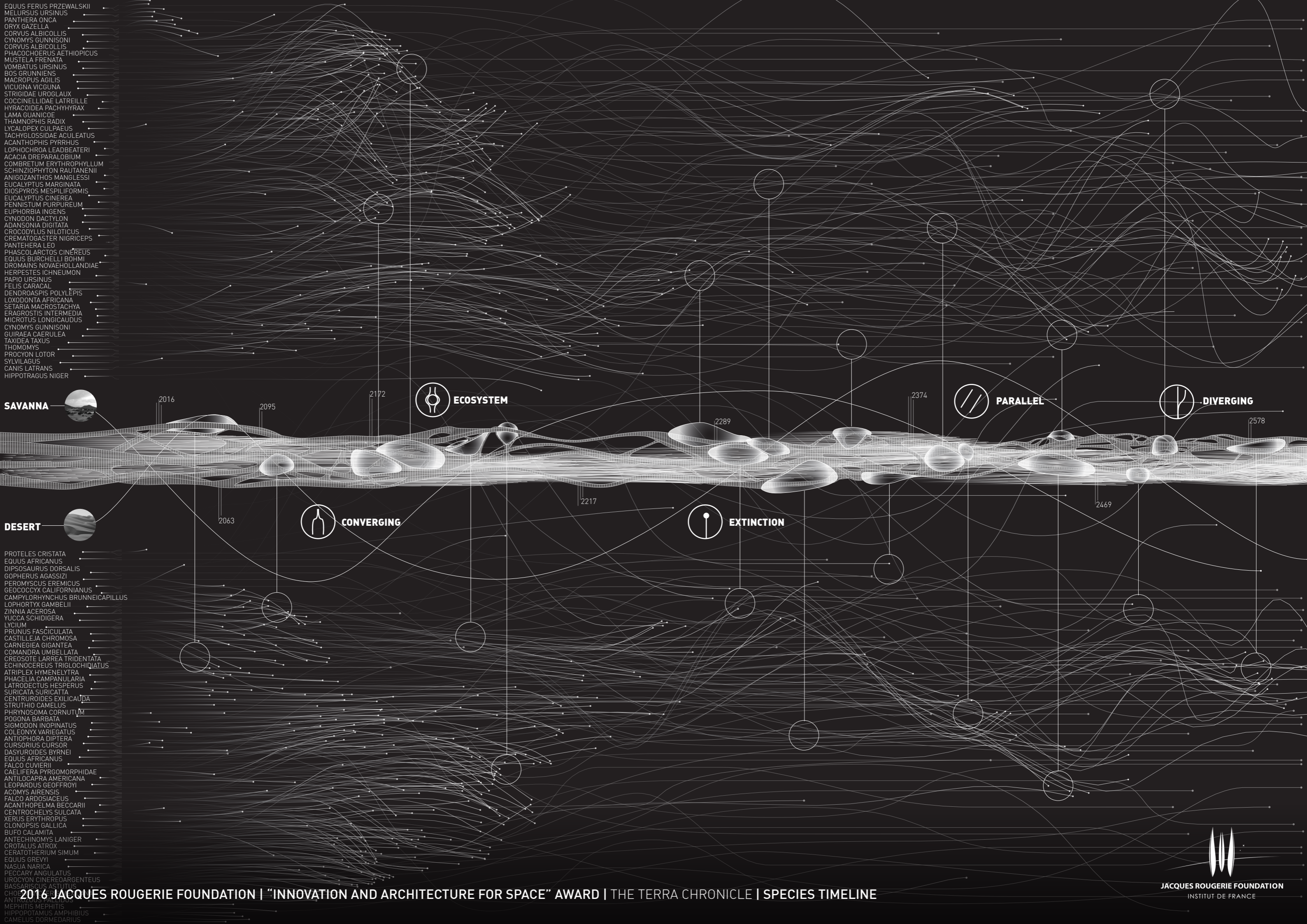
GIVEN THE PERPETUAL EXPANSION OF HUMAN ACTIVITIES, THE IMPACT ON EARTH'S NATURAL ECOSYSTEMS BECOME INCREASINGLY SEVERE AND LETHAL. PROGRESS IN CONSTRUCTION TECHNOLOGIES ALLOW US TO BUILD UPWARDS INTO OUTER SPACE. THE *TERRA CHRONICLES* PROPOSES A NETWORK OF VERTICAL MONUMENTS FOR THE LIFE ON EARTH, CONTINUOUSLY BUILT UP THROUGH THE DECADES INTO THE GREAT BEYOND.

THE *TERRA CHRONICLES* ARCHIVES ALL LIVING SPECIES IN ITS PROXIMITY BY STORING THEIR DNA AND DATA SAMPLES OF WITHIN A FIBER UNIT THAT REFLECTS THE INTERACTIONS AND CRISIS EACH SPECIES FACES THROUGH TIME. THE PHYSICAL RELATIONSHIP BETWEEN EACH FIBER UNIT BECOMES REPRESENTATIVE OF THE CORRELATION OF THE SPECIES. THE DISTILLED NODES BETWEEN SEVERAL FIBERS ARE THE ECOSYSTEMS THE SPECIES ARE FOUND IN. THESE KNOTS RECREATE NATURAL ENVIRONMENTS AND PROVIDE THE OPPORTUNITY TO REHABILITATE LIVING AND ENDANGERED SPECIES. THEY ARE ALSO REPLICAS OF ECOSYSTEMS ON EARTH. THE *TERRA CHRONICLES* HOST SEEDS OF BIOMES THAT HAVE THE POTENTIAL BE RESTORED OR EXPANDED SO THAT ONE DAY THE EARTH OR OTHER HABITABLE LOCATIONS COULD TEEM WITH LIFE.

THE *TERRA CHRONICLES* IS CONSTRUCTED OF THREE DISTINCT STRUCTURAL SYSTEMS FOR COHERENT ARTICULATION OF ITS FUNCTION AND FORM. THE PRIMARY STRUCTURE IS MADE FROM THICK BONE LIKE BRANCHES THAT SUPPORT THE SECONDARY HAIR-LIKE FIBERS THAT EMBODIES EACH SPECIES AND THE TERTIARY SYSTEM WHICH IS COMPOSED OF SOFT ROUND MEMBRANE CAPSULES EXTRUDED FROM THE INTERSECTION AND NODES OF THE PRIMARY AND SECONDARY MEMBERS.

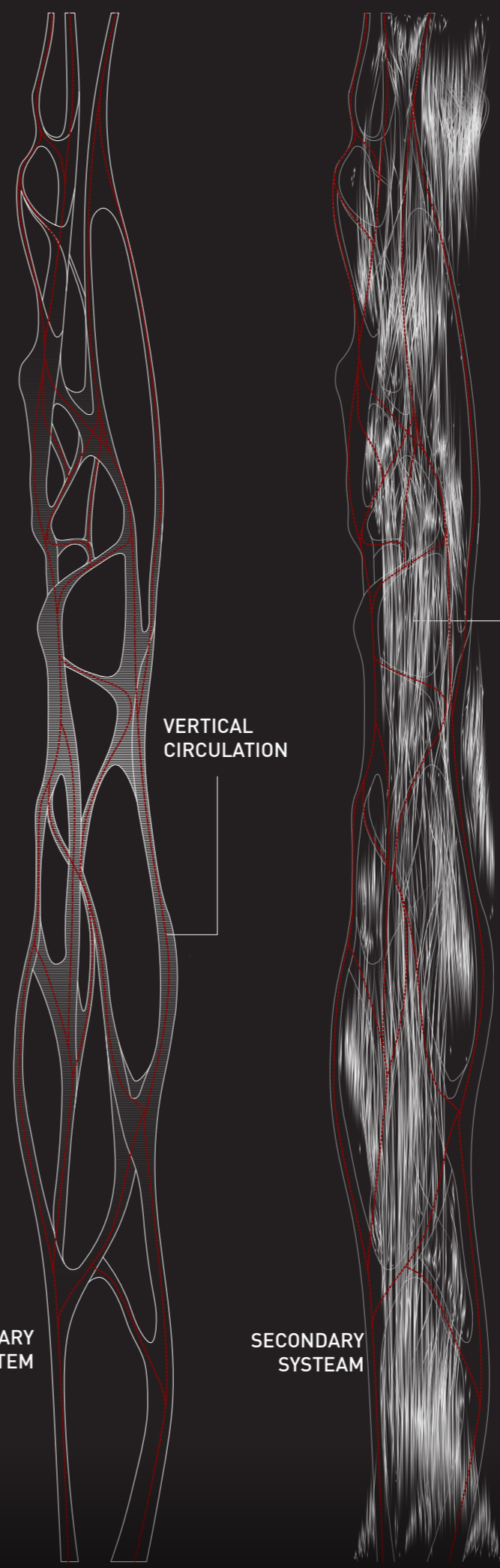
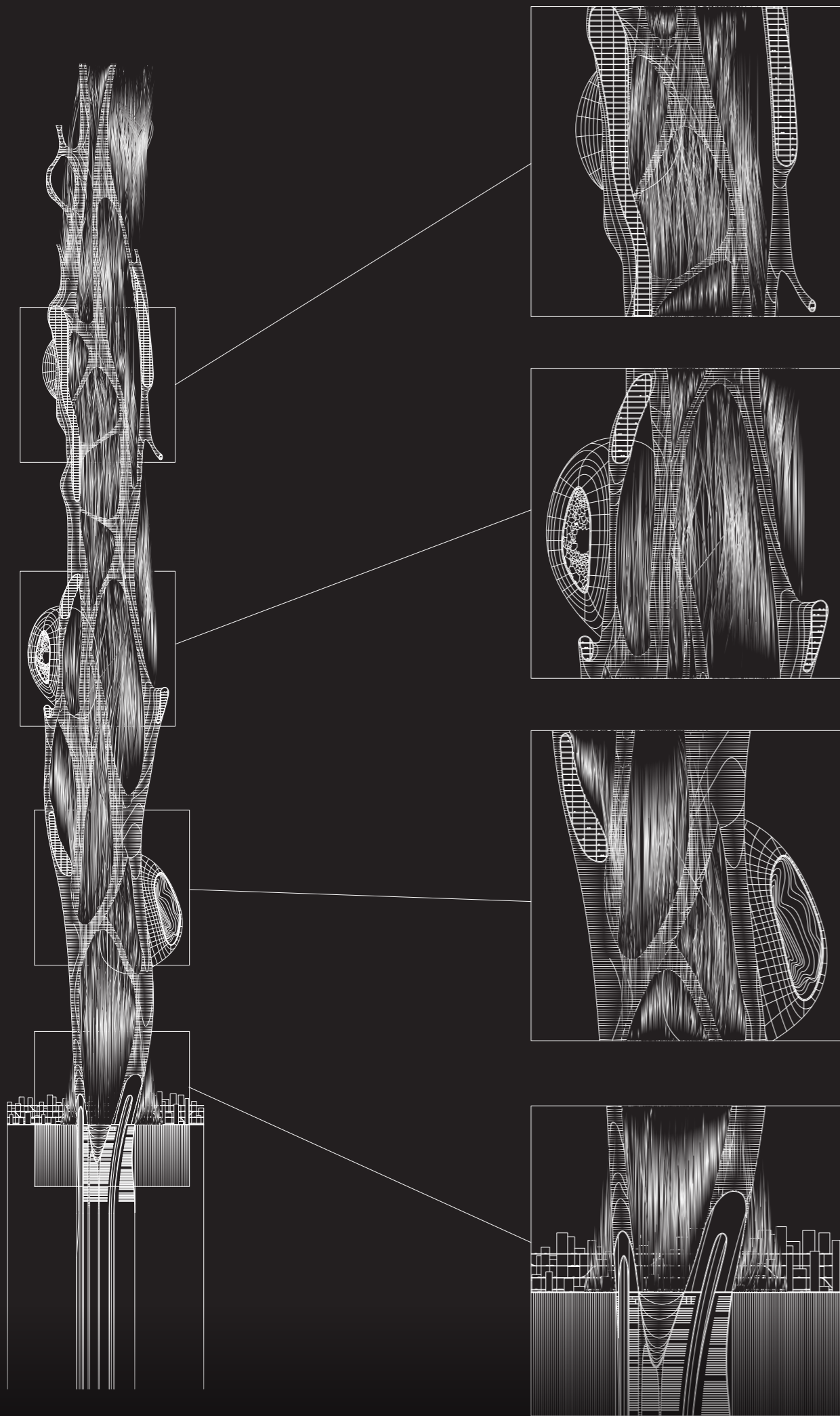
FROM THE DISTANCE, EACH TOWER READS AS A LINEAR TIMELINE, EXTENDING INTO SPACE, EMBODYING THE LIFE AND DEATH OF THE ORGANISMS ON EARTH THAT ARE STRUGGLING TO CHANGE AND ADAPT TO THEIR ENVIRONMENT. THE *TERRA CHRONICLES* IS A TRIBUTE TO NOSTALGIA BUT ALSO A POTENTIAL SEED WAITING ACTIVATION INTO SPACE.





- MELURUS URINUS
- MELURUS URINUS
- PANTHERA ONCA
- ORYX GAZELLA
- CORVUS ALBICOLLIS
- CYNOMYS GUNNISONI
- CORVUS ALBICOLLIS
- PHACOCHOERUS AETHIOPICUS
- MUSTELA FRENATA
- VOMBATUS URSINUS
- BOS GRUNNIENS
- MACROPUS AGILIS
- VICUGNA VICGUNA
- STRIGIDAE UROGLAUX
- COCCINELLIDAE LATREILLE
- HYRACOIDEA PACHYHYRAX
- LAMA GUANICOE
- THAMNOPHIS RADIX
- LYCALOPEX CULPAEUS
- TACHYGLOSSIDAE ACULEATUS
- ACANTHOPHIS PYRRHUS
- LOPHOCHROA LEADBEATERI
- ACACIA DREPARALOBIIUM
- COMBRETUM ERYTHROPHYLLUM
- SCHINZIOPHYTON RAUTANENII
- ANIGOZANTHOS MANGLESSI
- EUCALYPTUS MARGINATA
- DIOSPYROS MESPILIFORMIS
- EUCALYPTUS CINEREA
- PENNISTUM PURPUREUM
- EUPHORBIA INGENS
- CYNODON DACTYLON
- ADANSONIA DIGITATA
- CROCODYLUS NILOTICUS
- ORNIATOGASTER NIGRICEPS
- PANTHERA LEO
- PHASCOLARCTOS CINEREUS
- EQUUS BURCHELLI BOHMI
- DROMAINS NOVAEHOLLANDIAE
- HERPESTES ICHNEUMON
- PAPIO URSINUS
- FELIS CARACAL
- DENDROASPIS POLYLEPIS
- LOXODONTA AFRICANA
- SETARIA MACROSTACHYA
- ERAGROSTIS INTERMEDIA
- MICROTUS LONGICAUDUS
- CYNOMYS GUNNISONI
- GUIRAEA CAERULEA
- TAXIDEA TAXUS
- THOMOMYS
- PROCYON LOTOR
- SYLVILAGUS
- CANIS LATRANS
- HIPPOTRAGUS NIGER

- PROTELES CRISTATA
- EQUUS AFRICANUS
- DIPSOSAURUS DORSALIS
- GOPHERUS AGASSIZI
- PEROMYSCUS EREMICUS
- GEOCOCCYX CALIFORNIANUS
- CAMPYLORHYNCHUS BRUNNEICAPILLUS
- LOPHORTYX GAMBELII
- ZINNIA ACEROSA
- YUCCA SCHIDIGERA
- LYCIUM
- PRUNUS FASCICULATA
- CASTILLEJA CHROMOSA
- CARNEGIEA GIGANTEA
- COMANDRA UMBELLATA
- CREOSOTE LARREA TRIDENTATA
- ECHINOCEBUS TRIGLOCHIDIATUS
- ATRIPLIX HYMENEUTRA
- PHACELIA CAMPANULARIA
- LATRODECTUS HESPERUS
- SURICATA SURICATA
- CENTRUROIDES EXILICAUDA
- STRUTHIO CAMELUS
- PHRYNOSOMA CORNUTUM
- POGONA BARBATA
- SIGMODON INOPINATUS
- COLEONYX VARIEGATUS
- ANTIOPHORA DIPTERA
- CURSORIUS CURSOR
- DASYUROIDES BYRNEI
- EQUUS AFRICANUS
- FALCO CUVIERII
- CAELIFERA PYRGOMORPHIDAE
- ANTILOCAPRA AMERICANA
- LEOPARDUS GEOFFROYI
- ACOMYS AIRENSIS
- FALCO AROOSIAGEUS
- ACANTHOPHELMIA BECCARII
- CENTROCHELYS SULCATA
- XERUS ERYTHROPUS
- CLONOPSIS GALLICA
- BUFO CALAMITA
- ANTECHINOMYS LANIGER
- CROTALUS ATROX
- CERATOTHERIUM SIMUM
- EQUUS GREVYI
- NASUA NARICA
- PECCARY ANGULATUS
- UROCYON CINEREOARGENTEUS
- BASSARISCUS ASTUTUS
- CHOLEPUS PALLIUS
- ANTREAEUS PALLIUS
- MEPHITIS MEPHITIS
- HIPPOPOTAMUS AMPHIBIUS
- CAMELUS DORMEDARIUS



PRIMARY SYSTEM

VERTICAL CIRCULATION

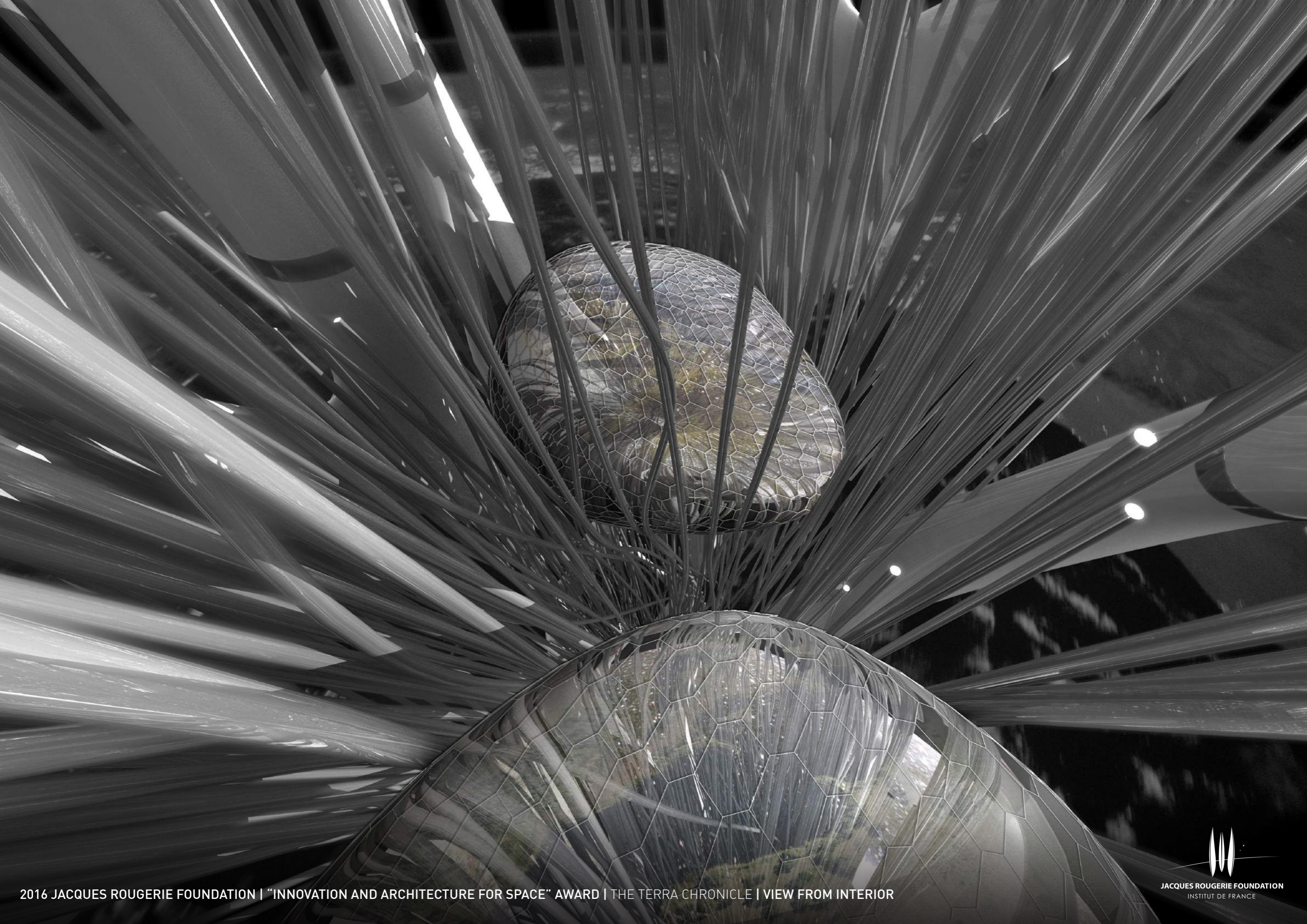
SECONDARY SYSTEM

DATA STORAGE

TERTIARY SYSTEM

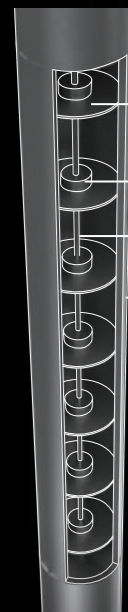
ECOSYSTEM NODES





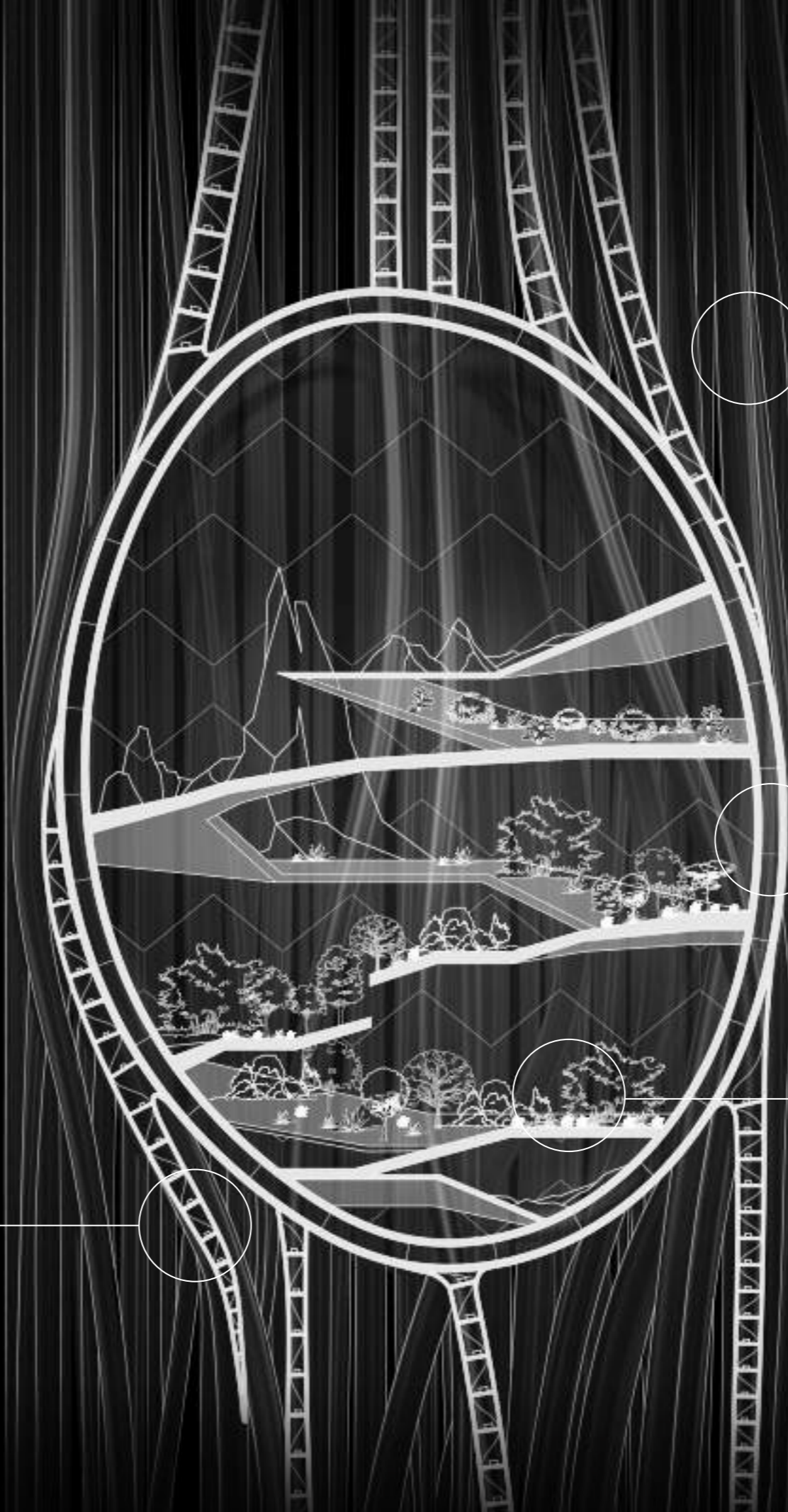


THE DISTILLED NODES BETWEEN SEVERAL FIBRES ARE THE ECOSYSTEMS THE SPECIES ARE FOUND IN.



- YEAR PLATES
- DNA/DATA STORAGE
- VERTICAL CIRCULATION

THE TERRA CHRONICLES ARCHIVES ALL LIVING SPECIES BY STORING THEIR DNA AND DATA SAMPLES WITHIN A FIBRE UNIT THAT REFLECTS THE INTERACTIONS AND CRISIS EACH SPECIES FACES THROUGH TIME



FIBRE UNIT

MEMBRANE STRUCTURE

ECOSYSTEMS

