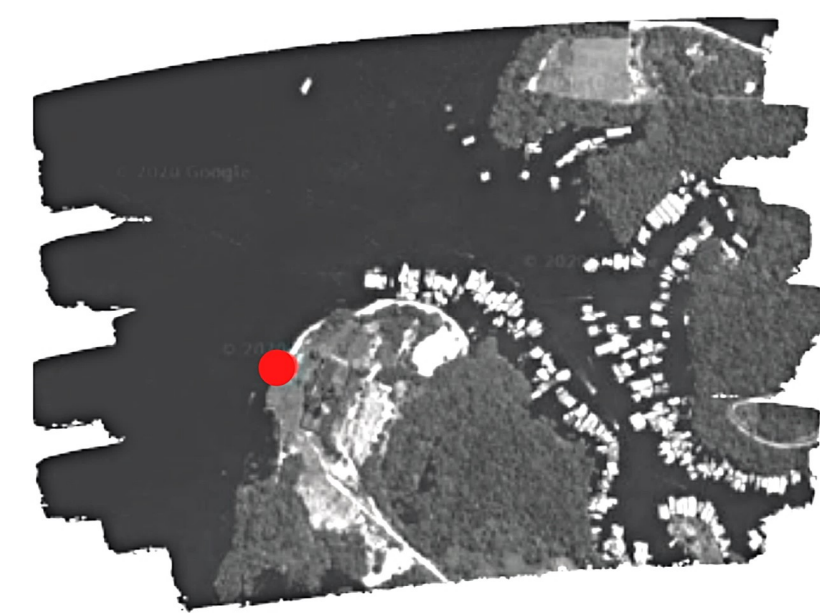
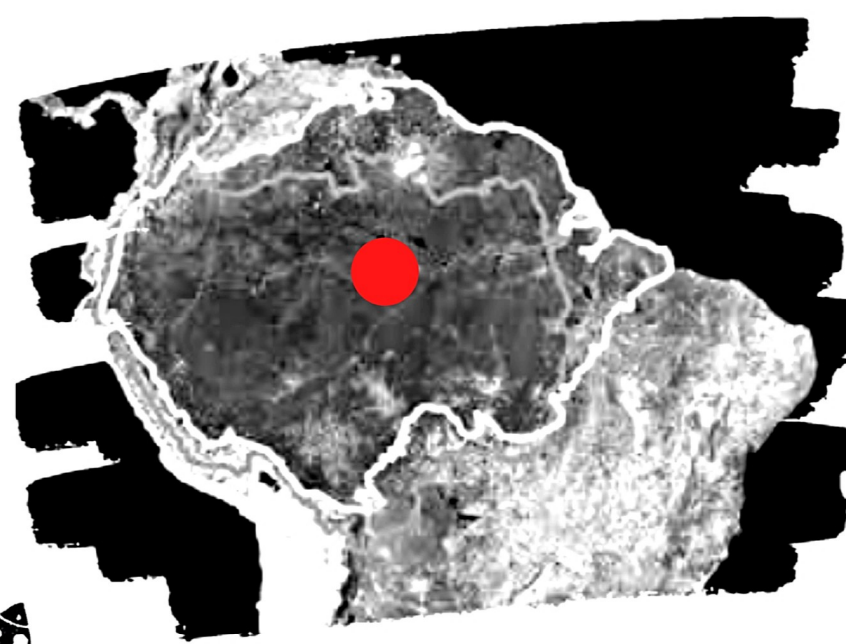


Amazon Pavilion

LOCATED ON THE BANKS OF THE AMAZON RIVER

IN THIS CONTEXT WE WILL PRESENT THE AMAZON PAVILION... WHICH WILL RESCUE THE MEMORY AND LIFESTYLE OF INDIGENOUS PEOPLES; A COMMUNITY THAT FIGHTS FOR ITS LAND, ITS DIVERSITY, AND ITS CUSTOMS.



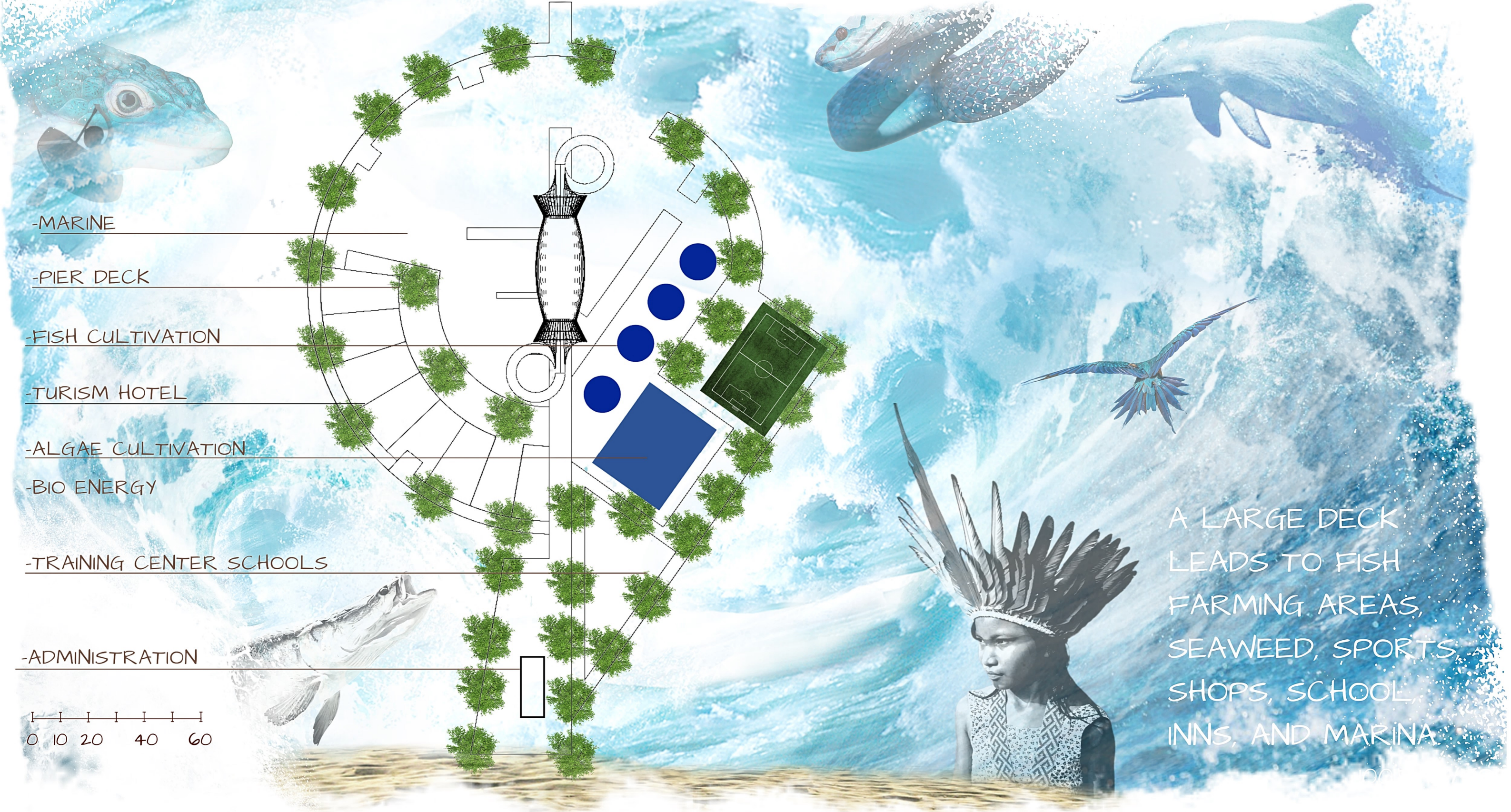
BRAZIL AMAZON JUNGLE.
MANAUS CITY



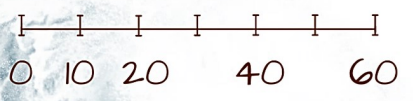
-3.049790169593407,
-60.11426102946858



THE INDIGENOUS POPULATIONS OF THE AMAZON HAVE SHOWN THEMSELVES TO BE THE BEST GUARDIANS OF THESE TRADITIONAL TERRITORIES. THE FACT THAT AMAZONIAN ECOSYSTEMS ARE AS RICH AS THEY ARE TODAY IS PROOF OF THE SUCCESS ACHIEVED BY THESE CULTURES IN LIVING IN BALANCE WITH THE ENVIRONMENT.

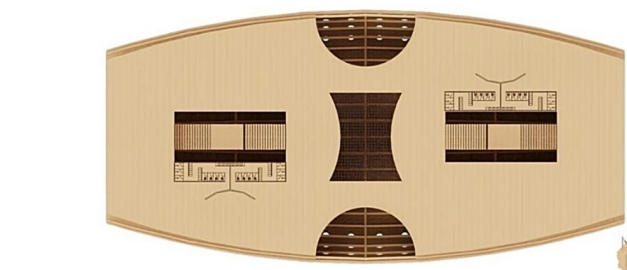


- MARINE
- PIER DECK
- FISH CULTIVATION
- TURISM HOTEL
- ALGAE CULTIVATION
- BIO ENERGY
- TRAINING CENTER SCHOOLS
- ADMINISTRATION

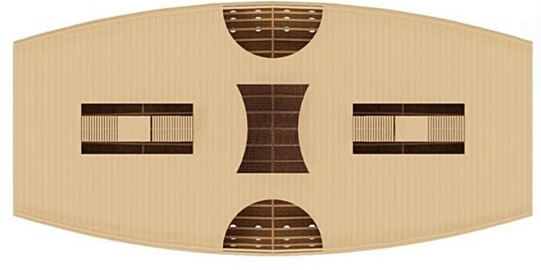


A LARGE DECK LEADS TO FISH FARMING AREAS, SEAWEED, SPORTS SHOPS, SCHOOL, INNS, AND MARINA

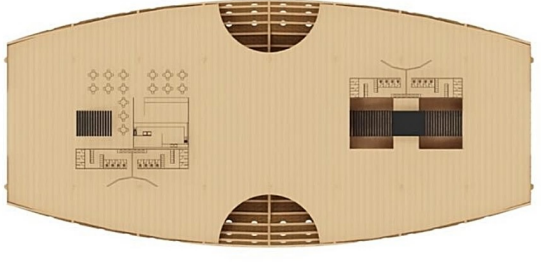
HOW DO INDIGENOUS PEOPLE USE THE LAND?
 INDIGENOUS PEOPLES HAVE A VERY STRONG BOND OF LOVE WITH THE LAND. ... EVERY PIECE OF THIS LAND IS SACRED TO MY PEOPLE. EVERY GLEAMING BRANCH OF A PINE TREE, EVERY HANDFUL OF SAND ON THE BEACHES, THE DARKNESS IN THE DENSE FOREST, EVERY CLEARING AND EVERY BUZZING INSECT IS SACRED IN THE MEMORY AND EXPERIENCE OF MY PEOPLE.



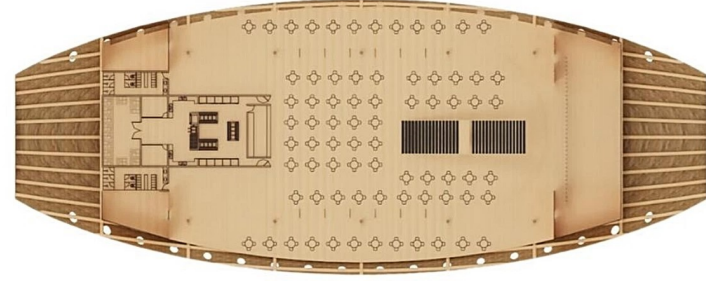
12.00 PLAN
LIVING
BATHROOM



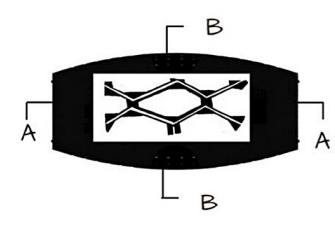
6.00 PLAN
EXHIBIT ROOM
INTIMATE SECTOR



0.00 PLAN
EXHIBIT ROOM
SNACK BAR
BATHROOM



- 6.00 PLAN
KITCHEN - RESTAURANT
ADMINISTRATIVE
TECHNICAL SUPPORT
BATHROOM



UNIQUE IN ITS ARCHITECTURAL DESIGN, AS IT WAS BUILT ON WOODEN STILTS FOLLOWING THE CULTURE AND TRADITION OF THE LOCAL INDIGENOUS CULTURE. WITH ITS FREE AND OPEN CIRCULATION THROUGHOUT THE PAVILION, IT FOLLOWS THE PRINCIPLES OF INDIGENOUS CULTURE, (NO WALLS AND ENVIRONMENTAL DIVISIONS)



AA

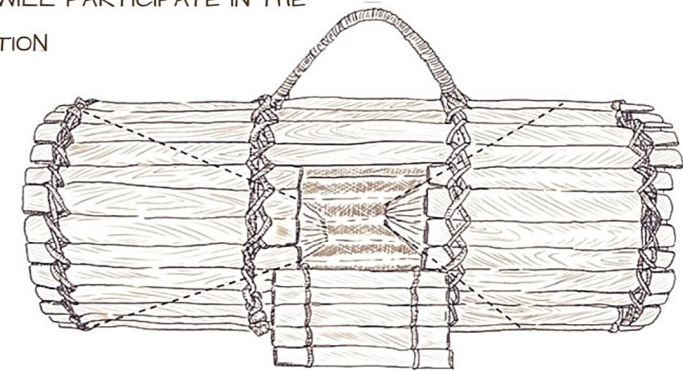
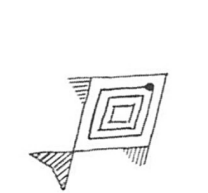
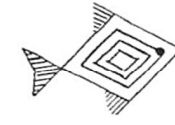
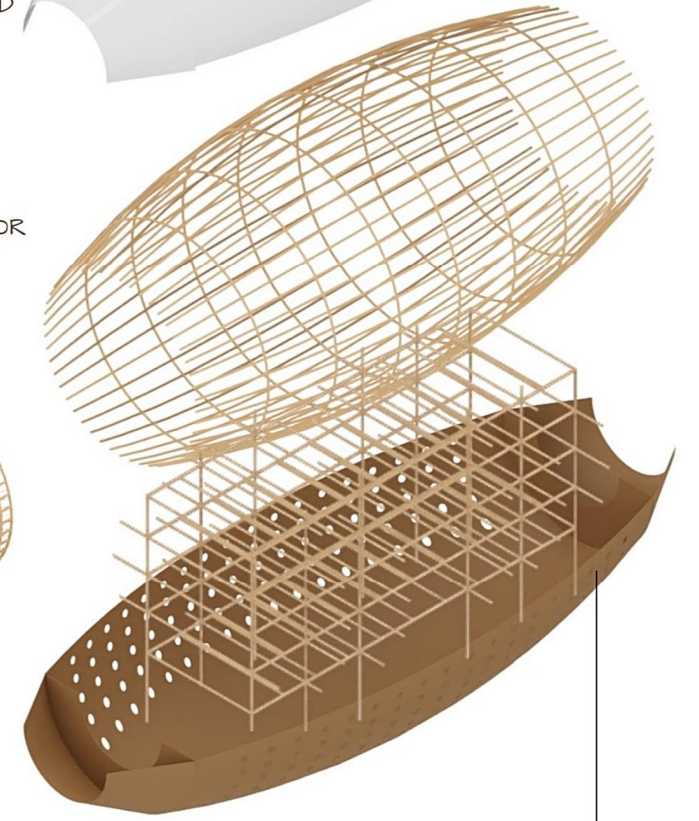
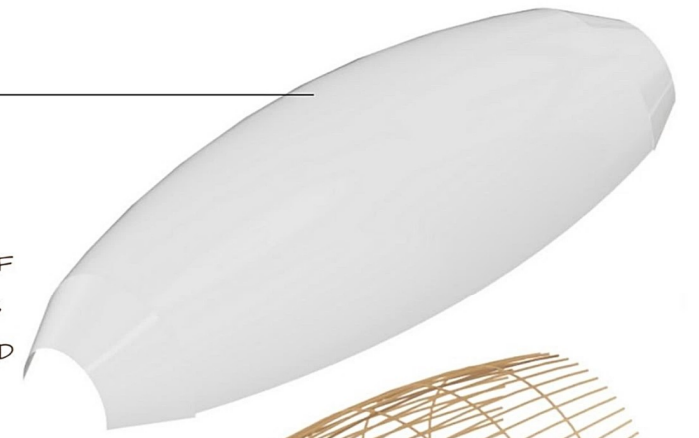
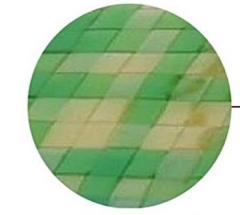


BB

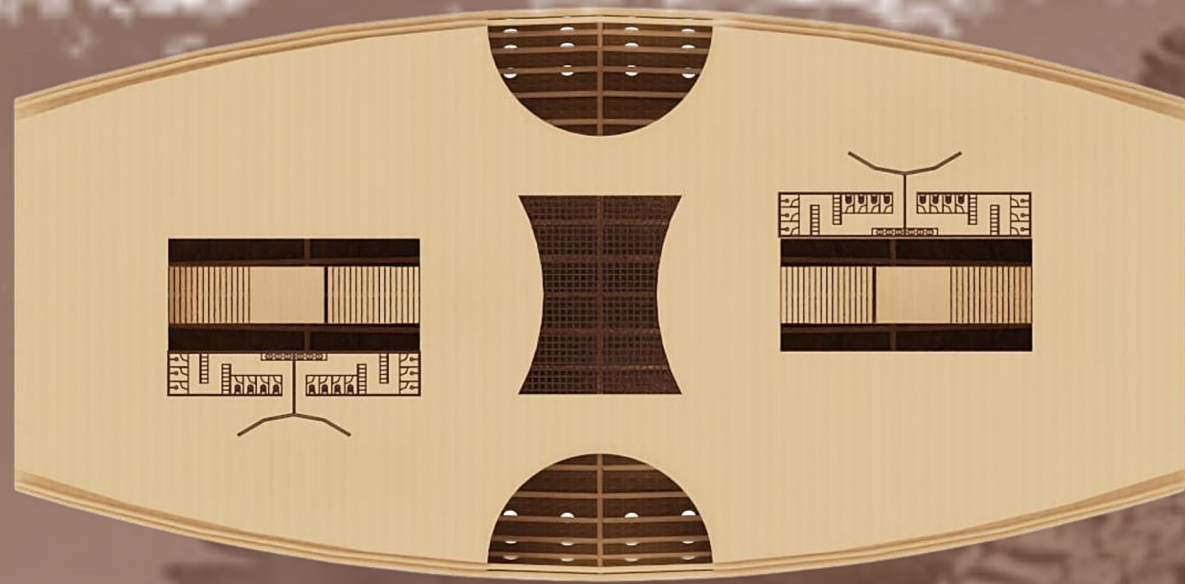


THE UPPER PART WILL BE COVERED WITH MEMBRANES MADE FROM THE RECYCLING OF PET BOTTLES USING THE SAME PROCESS AS THE MANUFACTURE OF BASKETS ASSOCIATED WITH PHOTOVOLTAIC CELLS, AND TAKING ADVANTAGE OF THE WEAVING CULTURE IN BASKETS TO MAKE WEFTS AND BRAIDS AND EVEN THE CEILINGS OF YOUR HOUSES WE WILL USE THESE TECHNIQUES FOR THE COATING ON THE BOTTOM,

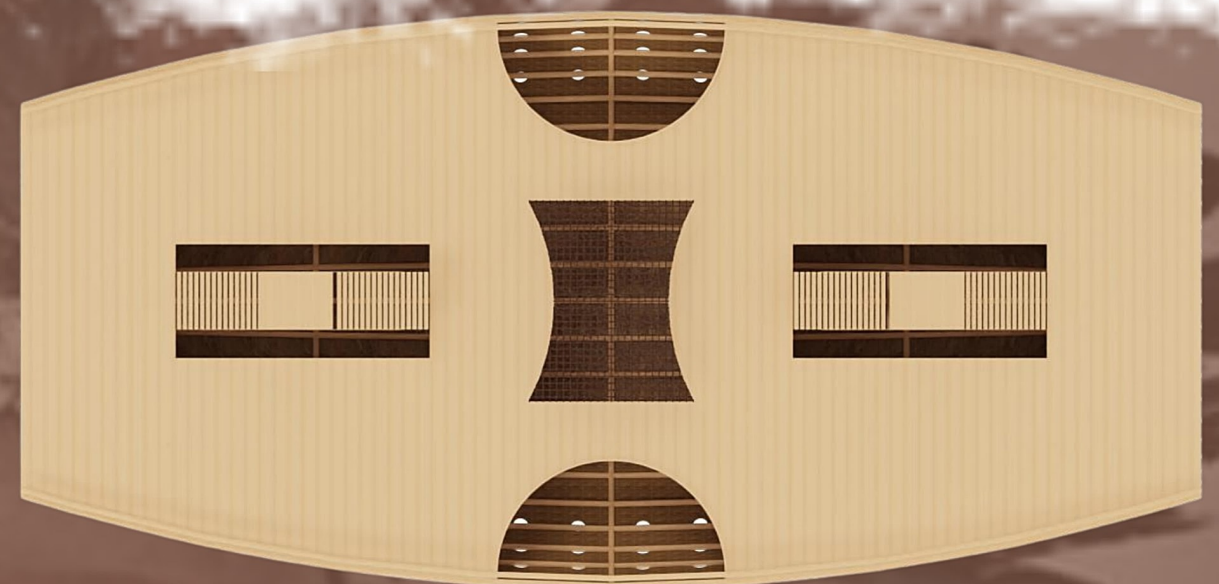
THIS WILL RESCUE AND PROMOTE THE EXTRAORDINARY CRAFT OF BASKETRY TO BRING IT BACK TO LIFE AND REINVENT IT AS A NEW CONSTRUCTION TECHNIQUE. IN ADDITION, IT SEEKS TO PRESENT WICKER AS A SUSTAINABLE AND VIABLE MATERIAL CONCEPT THAT REMAINS PRESENT THROUGHOUT THE BUILDING. BASKET WEAVING HAS A DIVERSITY IN EACH INDIGENOUS CULTURE WHICH WILL TRANSFORM THE PAVILION INTO A MOSAIC OF DIFFERENT COLORS AND WEAVES, SINCE SEVERAL VILLAGES WILL PARTICIPATE IN THE CONSTRUCTION



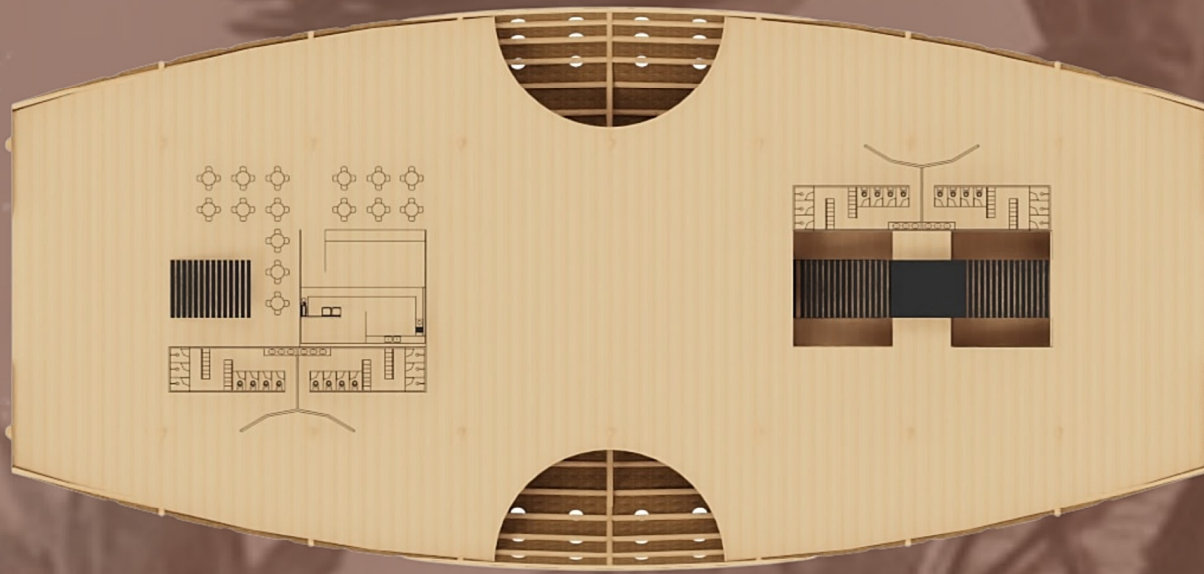
TRAP "MATAPI"
TRADITIONALLY USED IN FISHING



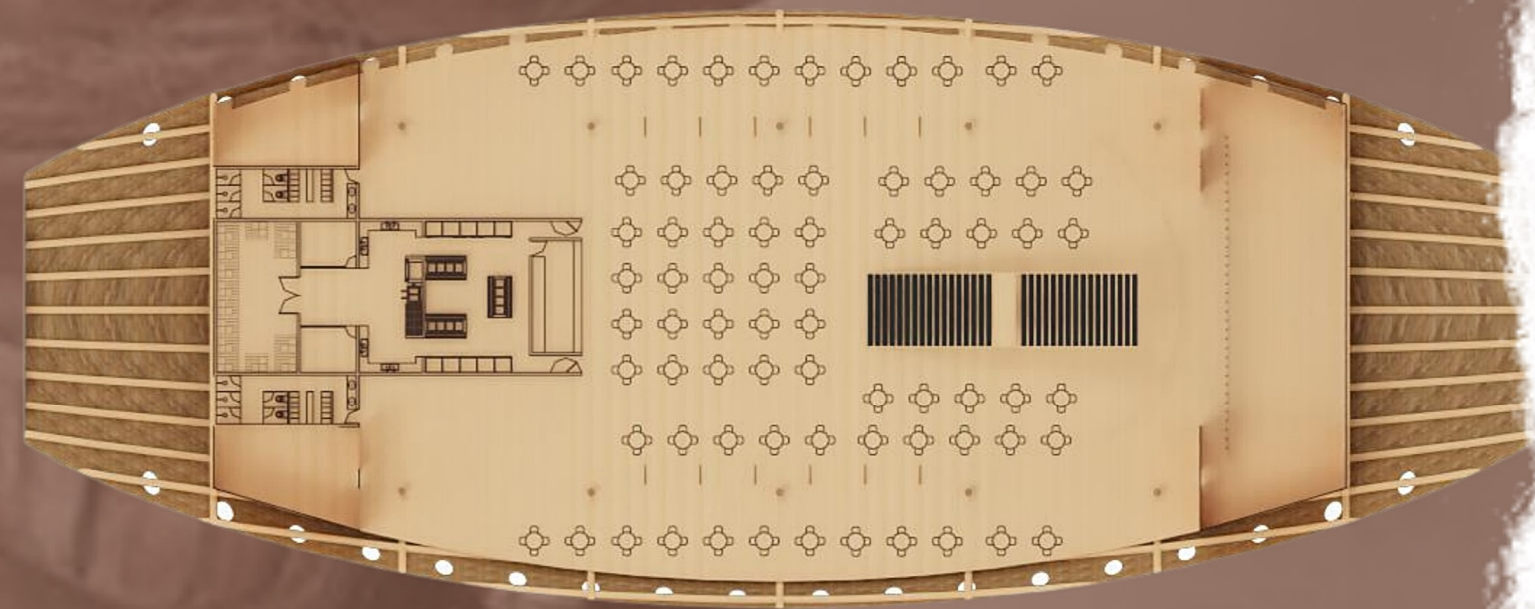
12.00: EXHIBITION, DORMITORY,



6.00: EXPOSURE,



0.00: EXPOSURE, ACCESS



-6.00: RESTAURANT, ADMINISTRATION





12.00: EXHIBITION,
DORMITORY,

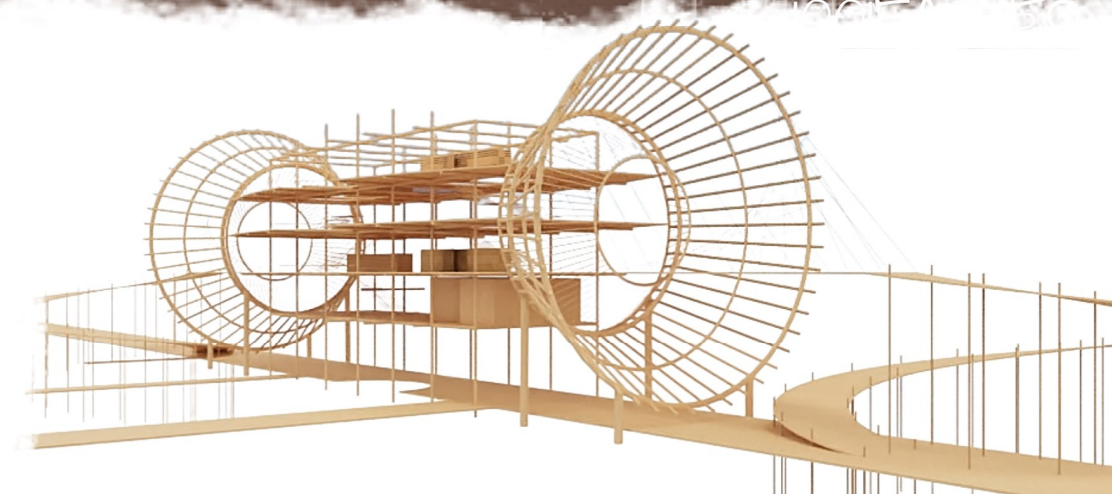
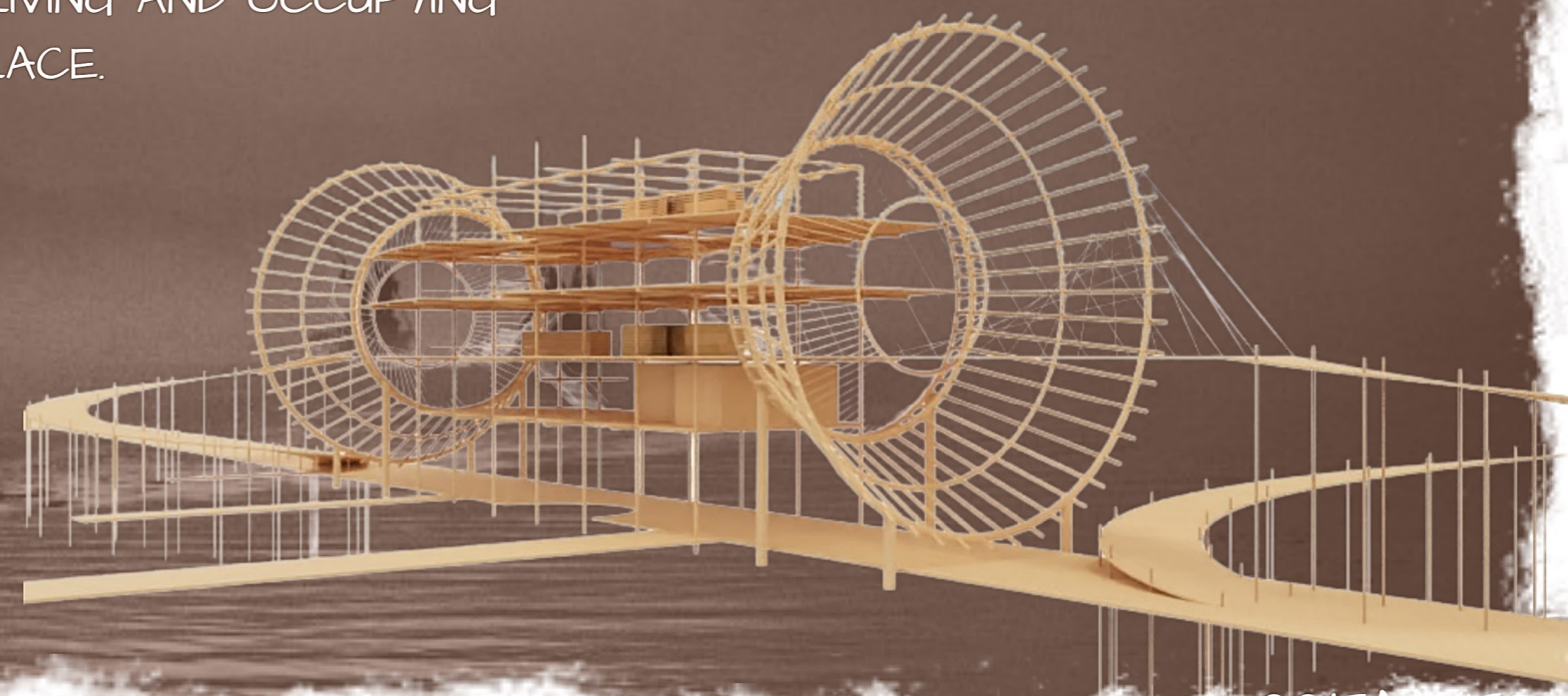
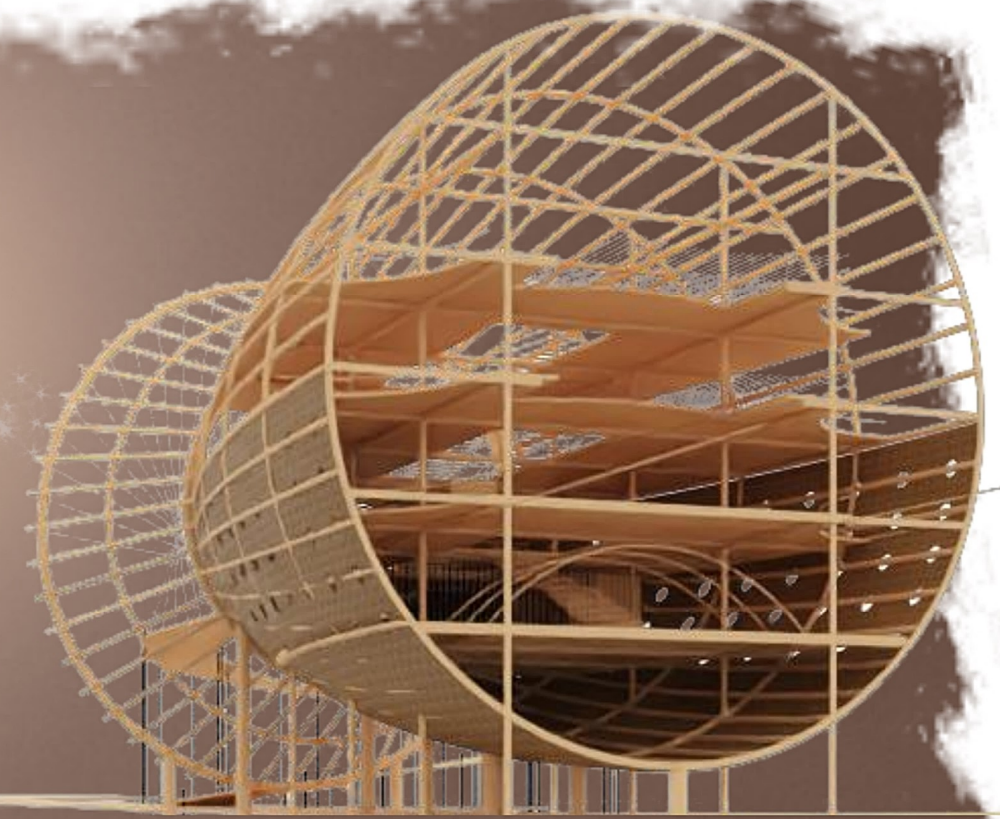
6.00: EXPOSURE,

0.00: EXPOSURE,
ACCESS



-6.00: RESTAURANT,
ADMINISTRATION

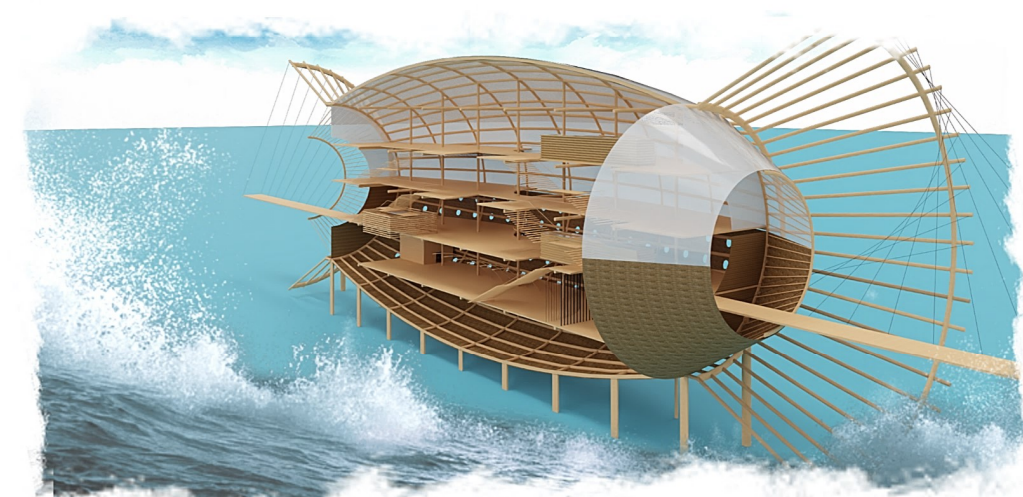
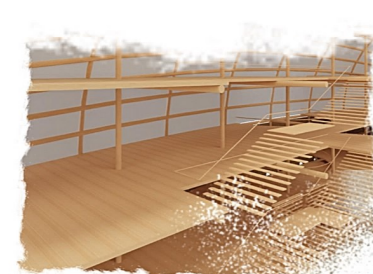
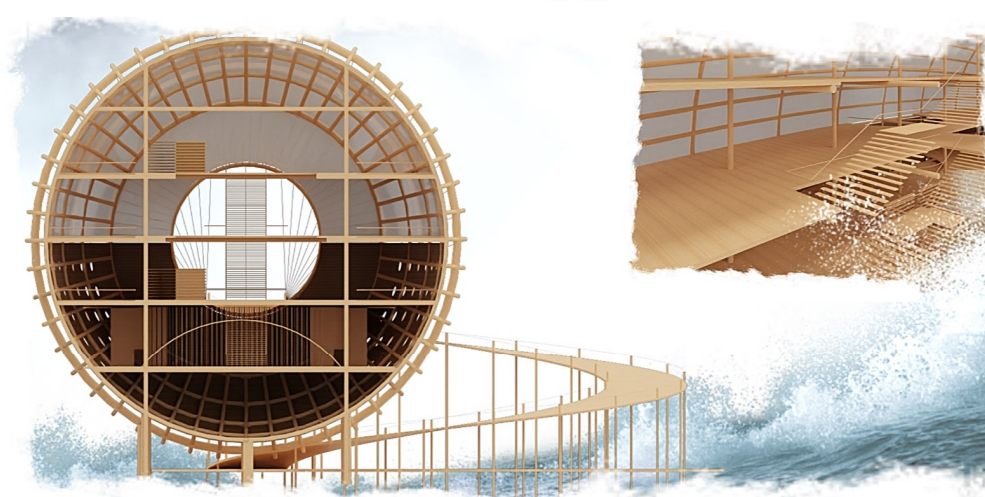
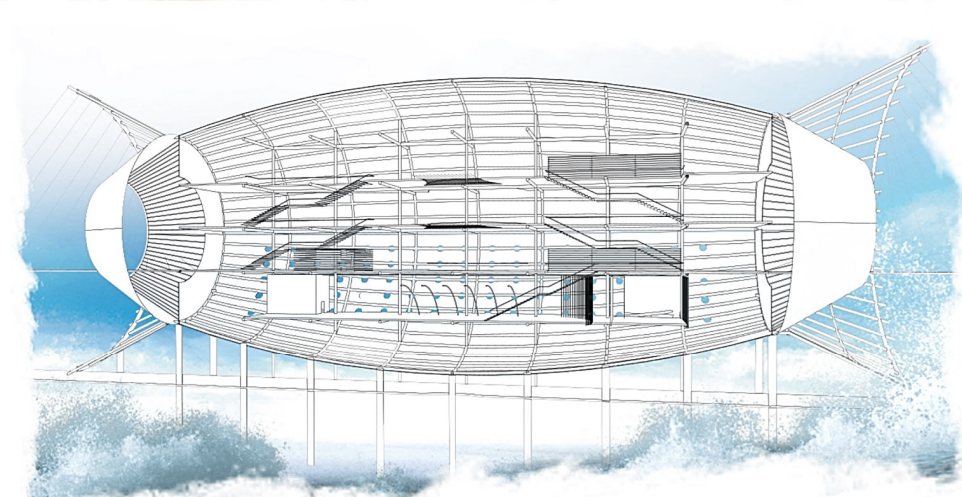
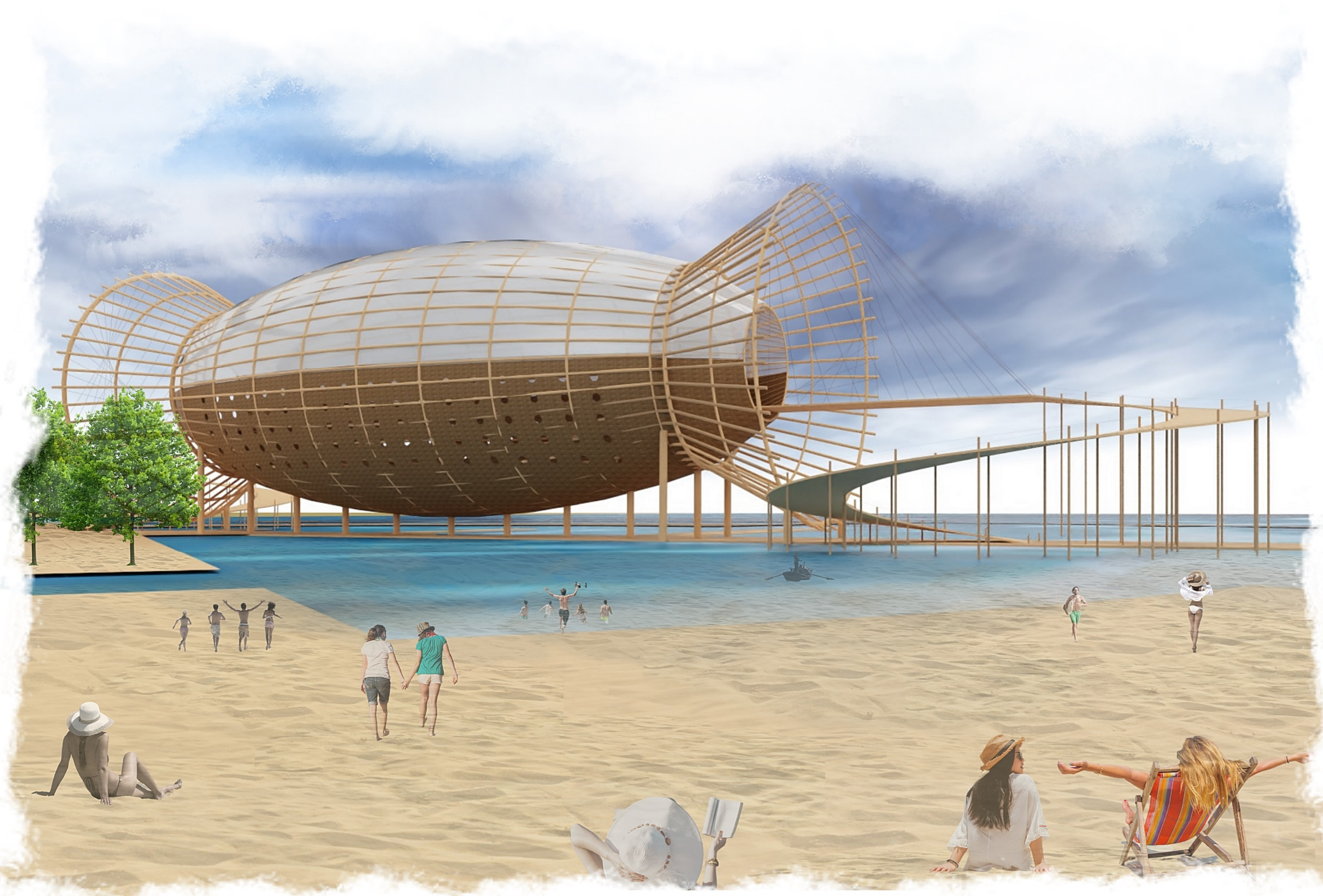
ENVIRONMENTAL
CONSERVATION OF
INDIGENOUS LANDS IS A
TERRITORIAL OCCUPATION
STRATEGY ESTABLISHED
BY INDIGENOUS PEOPLES.
INDIGENOUS PEOPLES
HELP TO EXPAND THE
DIVERSITY OF THE LOCAL
FAUNA AND FLORA, AS
THEY HAVE UNIQUE WAYS
OF LIVING AND OCCUPYING
A PLACE.



WITH TWO VERY DIFFERENT SEASONS:

FULL
FROM MARCH TO AUGUST,
WATER LEVELS RISE TO 15 METERS, AN IDEAL FACTOR FOR VISITING THE IGAPÓS, AS THE FLOODED LANDS ARE KNOWN, IN ALL THEIR BEAUTY.

DRY
FROM SEPTEMBER TO FEBRUARY, RIVER LEVELS REACH THEIR LOWEST POINT, REDUCING SPACE FOR FISH AND MAKING FISHING EASIER, AS WELL AS SPOTTING ALLIGATORS.



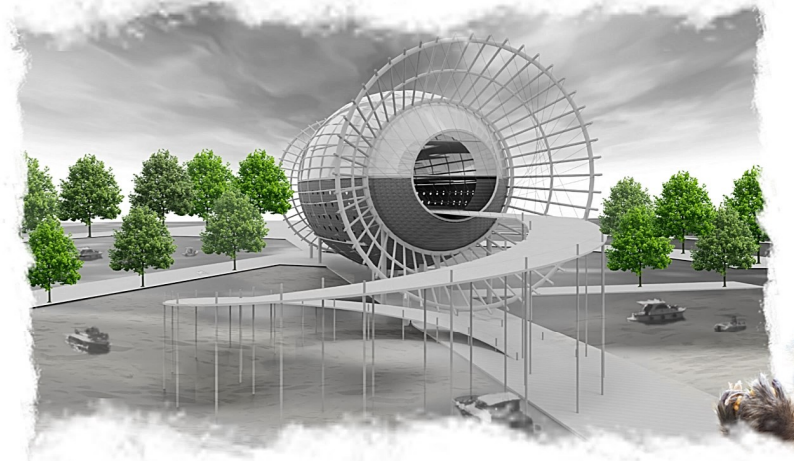


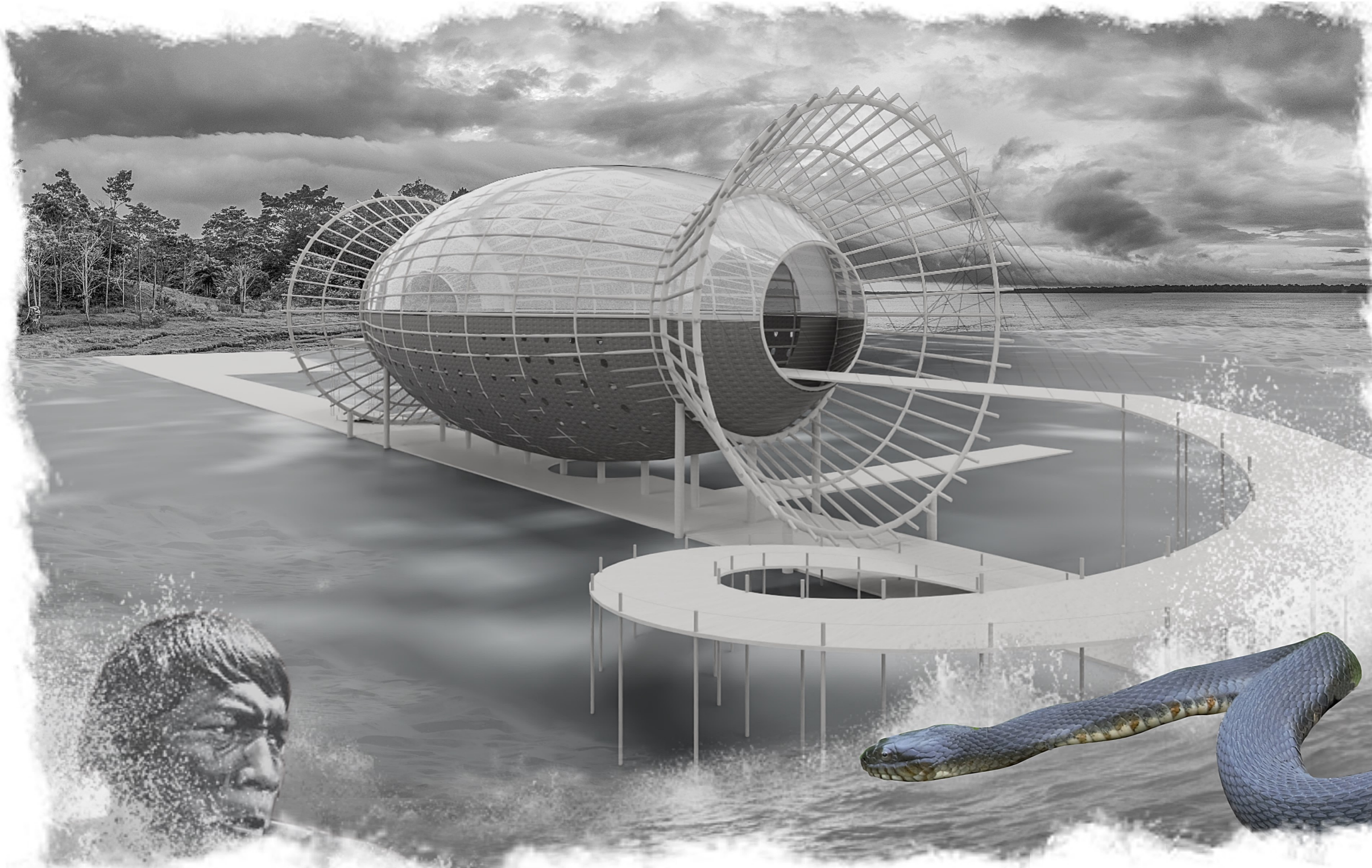
AT THE ENTRANCE, THE PORTALS MAINTAIN TEMPERATURE AND AIR CIRCULATION.

WE ARE IN ONE OF THE MOST BIODIVERSE PLACES ON EARTH. IN THIS CONTEXT WE WILL PRESENT THE AMAZON PAVILION... WHICH WILL RESCUE THE MEMORY AND LIFESTYLE OF INDIGENOUS PEOPLES A COMMUNITY THAT FIGHTS FOR ITS LAND, ITS DIVERSITY, AND ITS CUSTOMS REPRESENTING LESS THAN 5% OF THE WORLD'S POPULATION, INDIGENOUS PEOPLES PROTECT 80% OF GLOBAL BIODIVERSITY.



TO FOLLOW THIS MOVEMENT YOUR FOUNDATIONS ARE POSITIONED LIKE SHIPS IN A HARBOR, WITH MOORINGS.

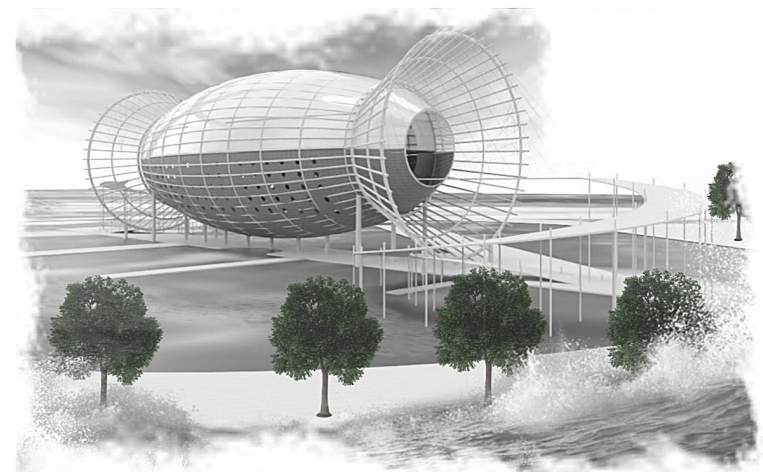


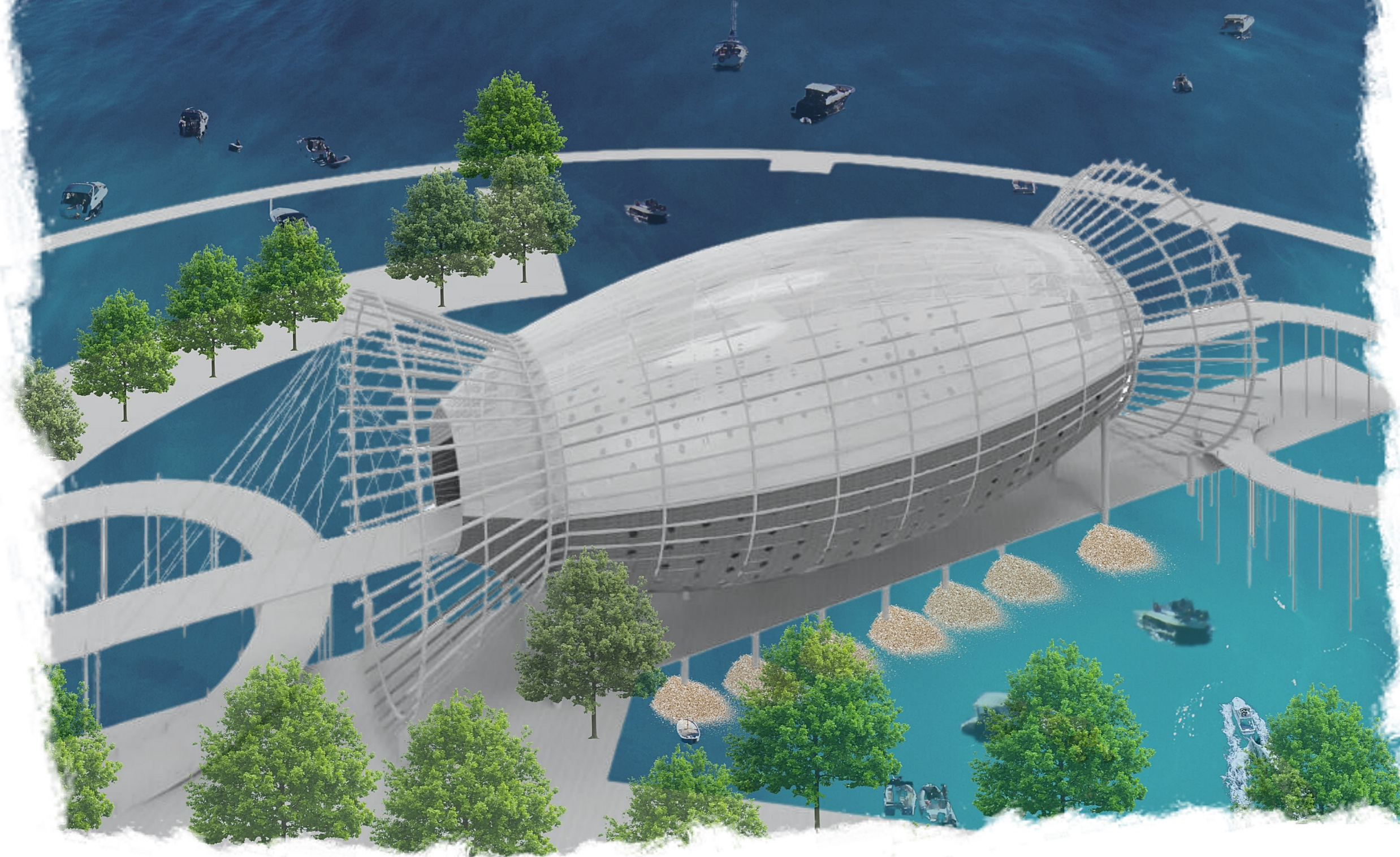


AMAZON RIVER:
 IN SOUTH AMERICA IS THE
 LARGEST RIVER BY
 DISCHARGE VOLUME OF
 WATER IN THE WORLD,
 AND THE DISPUTED
 LONGEST RIVER IN THE
 WORLD IN COMPARISON
 TO THE NILE

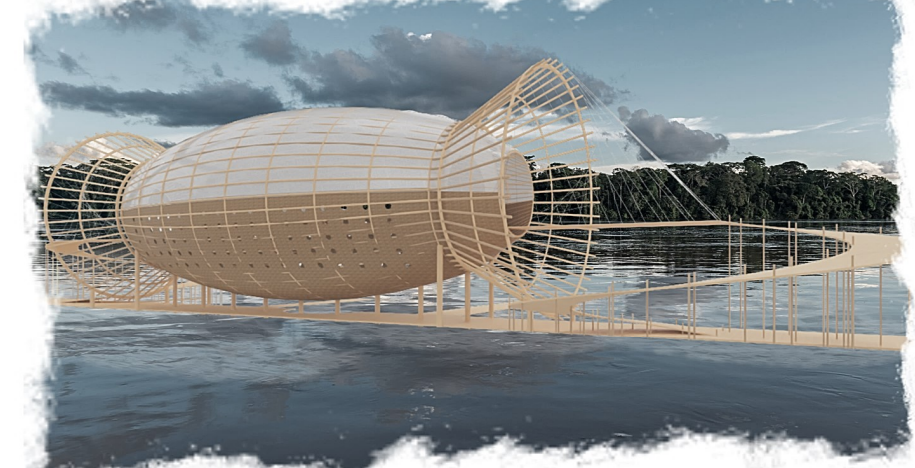
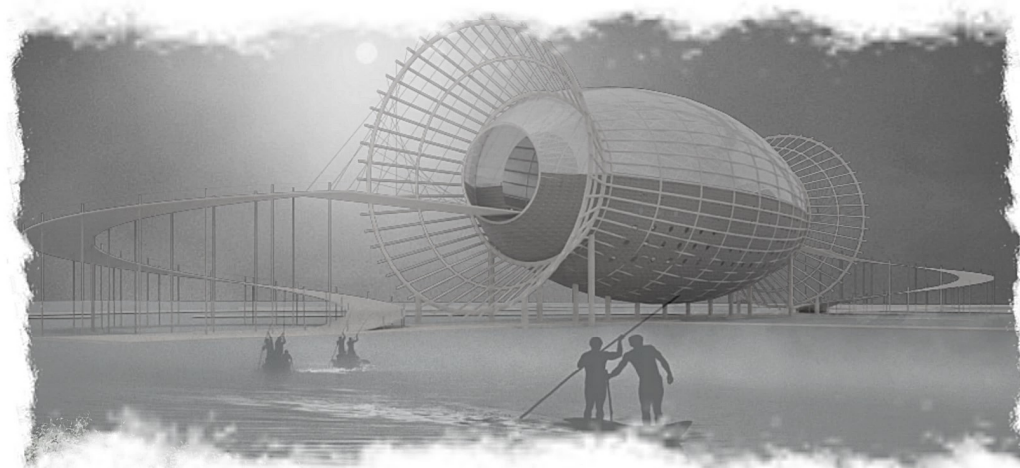
- THE AMAZON
 REPRESENTS 20% OF THE
 GLOBAL RIVERINE
 DISCHARGE INTO OCEANS

WHAT IS THE RELATIONSHIP OF INDIGENOUS PEOPLE WITH NATURE?
 RESPECT AND BALANCE, THE RELATIONSHIP OF THE INDIANS WITH
 NATURE IS GUIDED BY TWO BASIC ELEMENTS FOR THE DAILY LIFE
 OF ANY HUMAN BEING. THE RELATIONSHIP THAT ALSO INVOLVES
 AFFECTION MAKES THE INDIANS LIVE A CLOSER AND MORE SACRED
 RELATIONSHIP, AS IF THE EARTH WERE THE GREAT MOTHER.





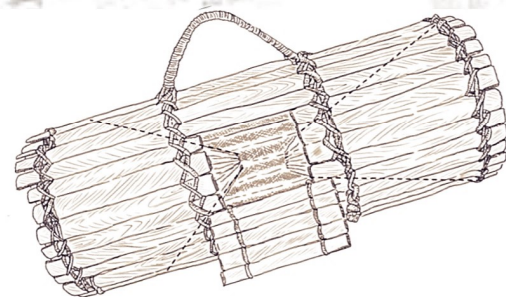
THE FOUNDATIONS OF THE FLOATING HOUSES ARE CERAMIC VATS FILLED WITH JUNCO, CONSIDERED UNSINKABLE. RINGS ATTACHED TO STAKES ENSURE THAT BUILDINGS REMAIN IN PLACE. BUILDINGS, HOWEVER, MOVE EASILY UP AND DOWN. THAT'S THE BIG TRICK. THAT WAY THEY ADJUST TO THE WATER LEVEL. YOU DON'T FIGHT WATER, BUT LIVE WITH IT... A FLOATING COMPLEX



Amazon Pavilion



BASED ON INDIGENOUS CULTURE, ITS DESIGN RESEMBLES A FISH TRAP.



IT CELEBRATES THE INDIGENOUS "RICH HERITAGE" AND WAY OF LIFE, PRESERVATION OF CULTURE, PATRIMONY AND SUSTAINABLE DEVELOPMENT.

WHAT IS THE ROLE OF INDIGENOUS PEOPLES IN RELATION TO BIODIVERSITY?
INDIGENOUS PEOPLES HELP TO EXPAND THE DIVERSITY OF LOCAL FAUNA AND FLORA, AS THEY HAVE UNIQUE WAYS OF LIVING AND OCCUPYING A PLACE. RECENT RESEARCH HAS SHOWN THAT INDIGENOUS PEOPLES PLAYED A KEY ROLE IN SHAPING THE BIODIVERSITY FOUND IN SOUTH AMERICA.